



## Installation Instructions for LD2AS-LH Landrover Discovery II 51L Sill Auxiliary Tank

This sill tank mounts in the sill area between the chassis out-riggers on either side of the vehicle. The filler will be located in the forward section of the rear wheel arch on the side of the tank. Fuel is transferred via an electric pump that will pump fuel from the auxiliary tank into the OEM tank. A combination switch/gauge will be located into a suitable position in the dash. When the switch is in operation an **ORANGE** light will be ON, indicating that the transfer pump is in operation. A series of lights will also indicate fuel level. All **GREEN** lights on showing FULL, one **RED** flashing light showing EMPTY.

**(DO NOT OPERATE TRANSFER PUMP WITH NO FUEL IN AUXILIARY TANK OR  
PUMP FAILURE WILL OCCUR).**

1. Mount switch/gauge into an available blank in dash, adjacent to electric mirror control. This will require care, to accurately and neatly cut the correct sized hole. Carry out wiring installation as per diagram.
2. Remove rear wheel and, using template, mark filler neck hole in wheel arch. Cut hole using hole saw and file sharp edges smooth. (**NOTE:** For left hand sill tank, remove brackets welded to centre section of chassis). Locate 2 x 6mm holes in rear chassis out-rigger, enlarge these holes to 8mm and fit secondary bracket to front chassis out-rigger as per diagram, drill 8mm holes and secure bracket. Remove crossmember from under transfer case.
3. Mount transfer pump in a suitable location. Check operation of gauge sender by rolling tank and measuring OHMS readings, (should read 0-2 OHMS **EMPTY** and 88-92 OHMS **FULL**). Install brass fittings into tank, 1/2 x 1/4 elbow adjacent to filler neck, 5/16 x 1/4 elbow to socket on side of tank.
4. Lift tank into position and secure temporarily by using 2 of the crossmember bolts previously removed. Check tank alignment, clamp tank up to secondary brackets, drill holes as required and secure tank. Refit crossmember using M8 x 25 bolts, flat and spring washers supplied in kit.

5. Fit 150mm length of 44mm hose to tank, then fit fill neck into hose. With filler cap in neck centralize filler neck in hole in inner wheel arch, clamp mounting tag to wheel arch, drill 2 x 6mm holes and secure filler with M6 bolts and Nyloc nuts. Install 19 x 8 x 6 double T piece into OEM fast fill hose as close as possible to chassis then connect all other remaining hoses and wires and neatly cable tie them away from any moving parts or heat sources. Fill tank with fuel and check for leaks, check gauge and pump operation.



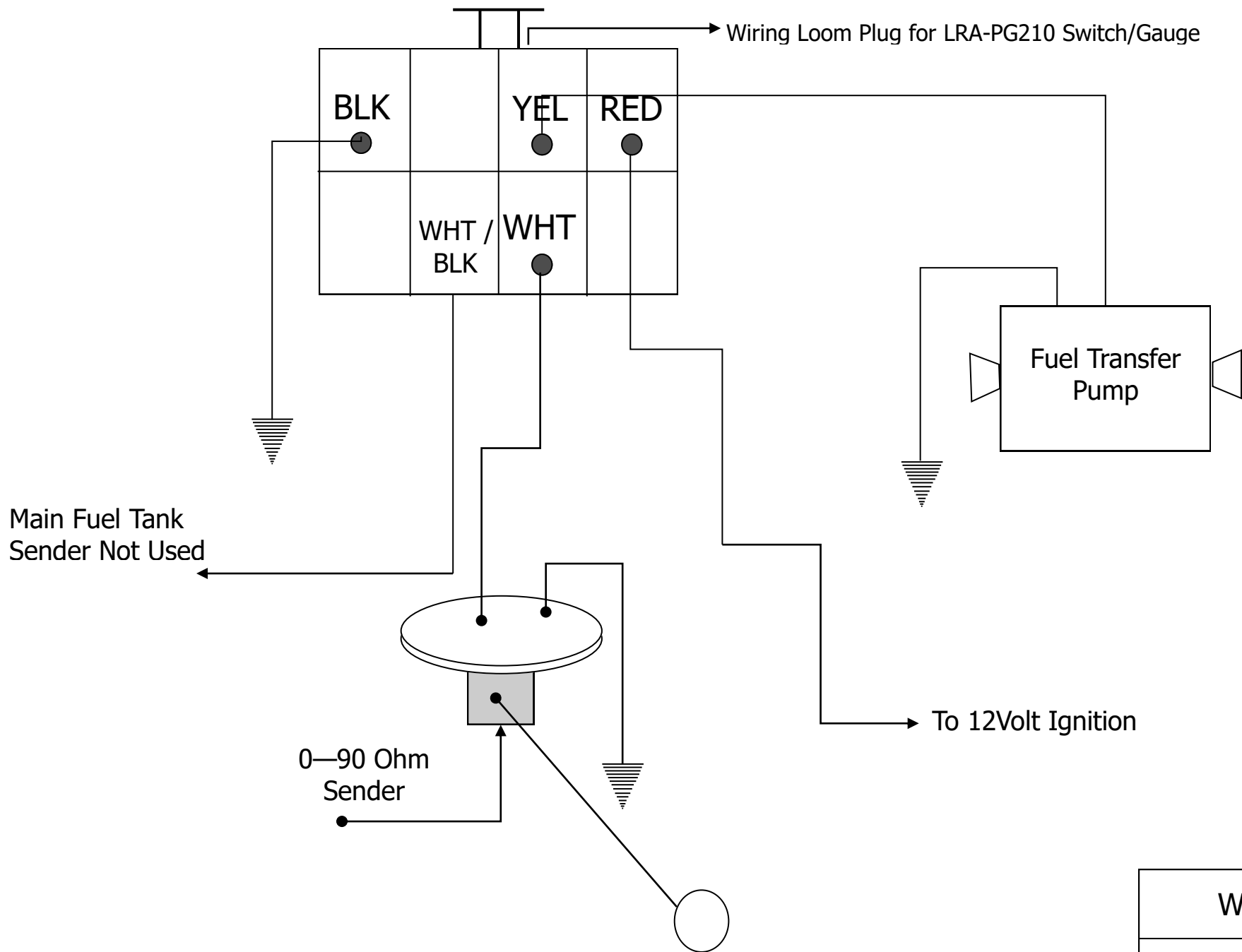
## FITTING KIT CONTENTS LD2AS-LH

<b>Brass:</b>	<b>Electrical:</b>
<ul style="list-style-type: none"> <li>○ 1 x P6 1/4 x 1/4 Elbow</li> <li>○ 1 x P6 5/16 x 1/4 Elbow</li> <li>○ 2 x P6 1/2 x 1/4 Elbow</li> </ul>	<ul style="list-style-type: none"> <li>○ 1 x LRA-PG210 Switch/Gauge Unit</li> <li>○ 1 x 3mm Two Core @ 5000mm</li> <li>○ 3 x Red Terminals</li> <li>○ 1 x 8mm Red Eye Terminal</li> <li>○ 1 x 6mm Red Eye Terminal</li> <li>○ 3 x Red Male Terminals</li> <li>○ 4 x 3mm Heat Shrink @ 25mm</li> </ul>
<b>Bolts / Nuts:</b>	<b>Misc Parts:</b>
<ul style="list-style-type: none"> <li>○ 9 x M8 x 25 Bolts</li> <li>○ 12 x M8 Flat Washers</li> <li>○ 4 x M8 Spring Washers</li> <li>○ 6 x M8 Nyloc Nuts</li> <li>○ 2 x M8 Nuts</li> <li>○ 5 x M5 x 10 Pan Head Screws</li> <li>○ 2 x M6 x 16 Bolts</li> <li>○ 2 x M6 Nyloc Nuts</li> <li>○ 4 x M6 Flat Washers</li> <li>○ 2 x M8 x 25 Bolts with 300mm Strap Welded On</li> </ul>	<ul style="list-style-type: none"> <li>○ 1 x 19 x 8 x 6 "T" Piece</li> <li>○ 1 x Front Secondary Bracket</li> <li>○ 1 x Rear Secondary Bracket</li> <li>○ 1 x Small Diameter CPC Type Filler Cap</li> <li>○ 1 x Filler Neck #FNLDS2SL for L/H Sill Tank</li> </ul>
<b>Hose Clamps:</b>	<b>Cable Ties:</b>
<ul style="list-style-type: none"> <li>○ 8 x 1/4" Hose Clamps</li> <li>○ 2 x 1/2" Hose Clamps</li> <li>○ 2 x 5/8" Hose Clamps</li> <li>○ 2 x 1 1/2" Hose Clamps</li> </ul>	<ul style="list-style-type: none"> <li>○ 8 x 7" Cable Ties</li> <li>○ 4 x 11" Cable Ties</li> </ul>
<b>Sender:</b>	<b>Pumps &amp; Filters:</b>
<ul style="list-style-type: none"> <li>○ 1 x VDO 220-004 Sender Set Up In Tank with 400mm Earth Lead</li> </ul>	<ul style="list-style-type: none"> <li>○ 1 x Z14K Filter</li> <li>○ 1 x E8012S Fuel Pump</li> </ul>

Hose:	8 Pages of Fitting Instructions Consisting of:
<ul style="list-style-type: none"> <li>○ 1 x 12mm Hose @ 600mm</li> <li>○ 1 x 44mm Hose @ 150mm</li> <li>○ 1 x 8mm Hose @ 1700mm</li> <li>○ 1 x 8mm Hose @ 800mm</li> <li>○ 1 x 6mm Hose @ 2200mm</li> </ul>	<ul style="list-style-type: none"> <li>○ 2 x Pages Fitting Instructions</li> <li>○ 2 x Pages Fitting Kit Contents</li> <li>○ 1 x Page WDSGPGC210 Diagram</li> <li>○ 1 x Page Filler Cut-Out Template</li> <li>○ 1 x Page Bracket Location Diagram</li> <li>○ 1 x Page Wiring Diagram</li> </ul>

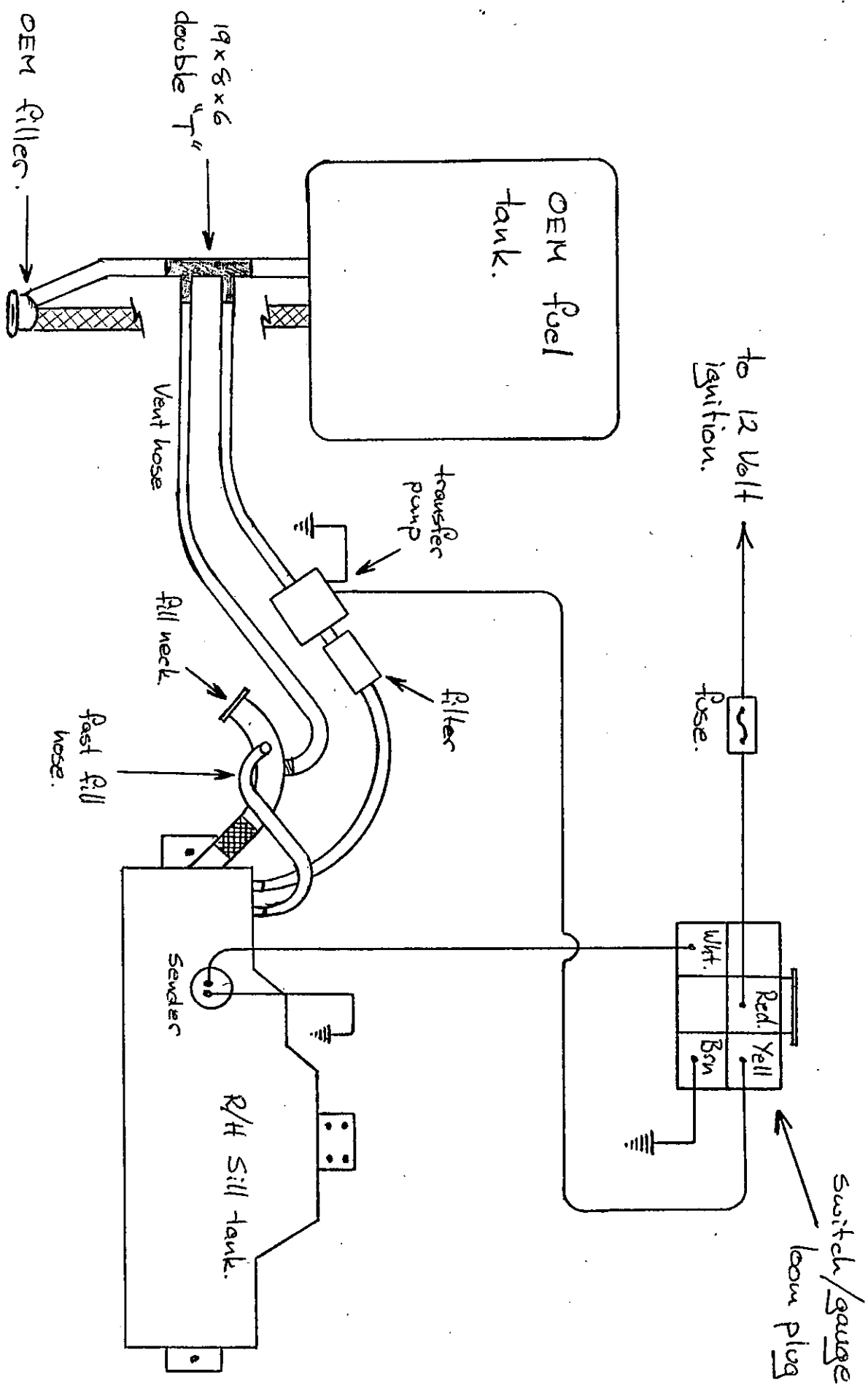
Kit Packed By\_\_\_\_\_

Checked By\_\_\_\_\_

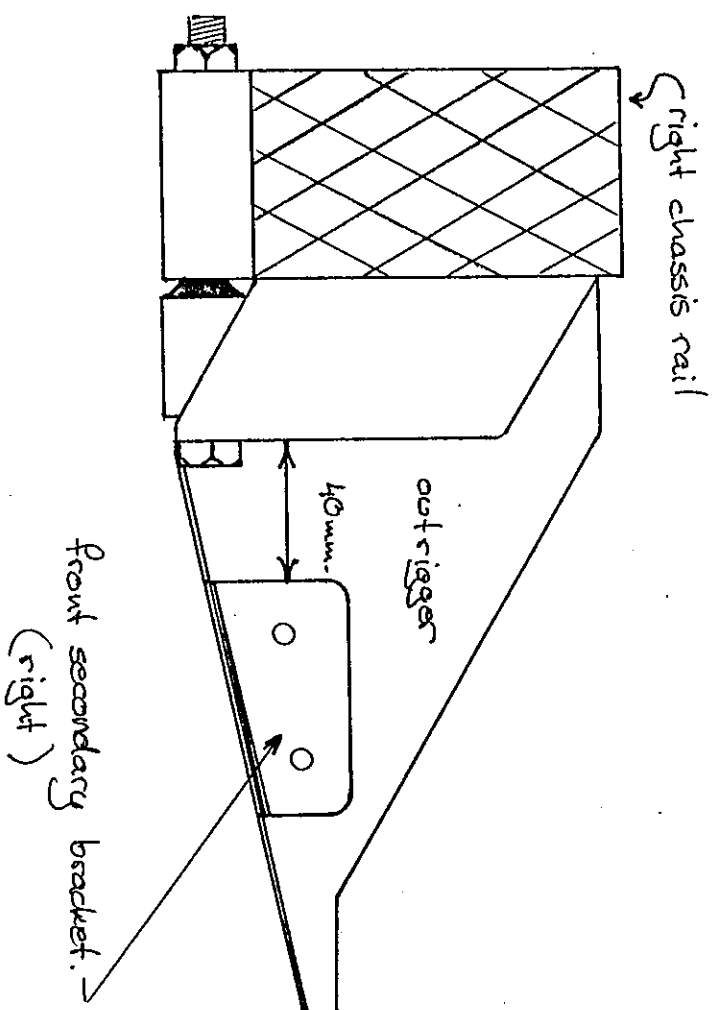
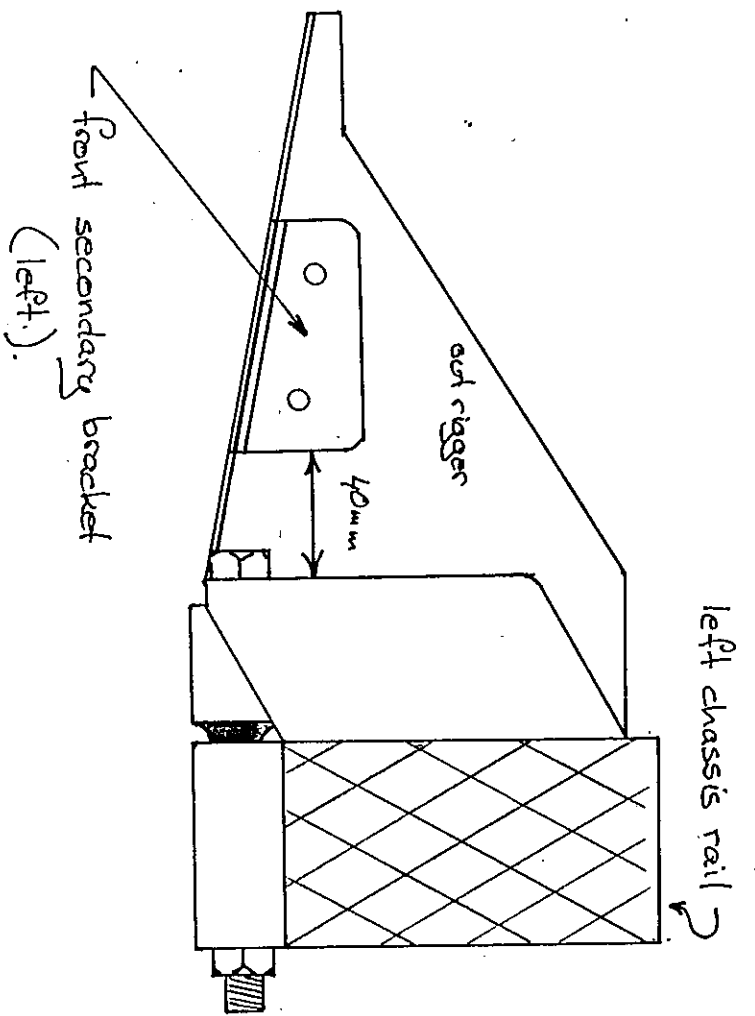


WDSGPG210

# Discovery Series 2. 51 litre sill tank.



Discovery Series 2 Sill tank.  
front secondary bracket mounting position.

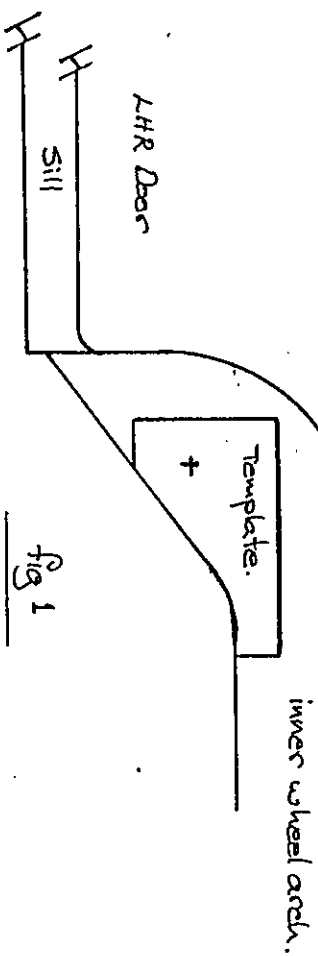


# Discovery Series 2 Sill tank. wheel arch filler template.

Place template in wheel arch as shown in fig 1. Pilot drill hole then enlarge to 76 mm with hole saw.  
For right hand sill tank use reverse side of template.

76 mm hole.

Cut on this line and discard lower portion.



Scale 1:1