



Installation Instructions for MTMKDC Mitsubishi Triton MK S/Cab & D/Cab 140L Replacement Tank

7/21 - RB

1. Drain and remove original tank. Disconnect tail shaft from diff only.
2. Remove exhaust pipe from cat to muffler, let muffler and tail pipe hang down, after removing hanger bolt at the rear of the muffler.
3. Remove fuel pump, sender unit and rollover valves from the original tank. Lengthen the sender unit float arm by 80mm inverting the float so that it points down. Increase the angle of the top bend on both the float arm and the low fuel light sensor (the rod in the kit is 100mm long to allow for 10mm overlap join). Then fit them to the new replacement tank. (Fit the sender unit first so you can check the float arm travel through the fuel pump hole to see that it does not foul on anything). **(Refer Pic 001,002)**
4. Cut the thread of the bolt that protrudes through the cage nut from the left hand rear seat mounting point. Screw the 16mm hose barb into the tank next to the filler.
5. Lift the tank into position, check body to tank clearance. Bolt in place with the original nuts on the LHS (use Loctite). Bolt the secondary bracket under the 2 x M8 bolts on the R/H side exhaust hanger and fix to tank with the M10 x 80mm bolt 55mm tube spacer and Nyloc nut with washers. Put the 6mm rubber pad between the round chassis crossmember and the R/H rear mount then drill through the bracket and the centre of the tube and fix with M10 x 90mm bolt washers and Nyloc nut. **(Refer Pic 004,005)** Connect all hoses, tighten all mounting bolts and hose clamps. Refit exhaust and drive shaft. Fill with fuel then start engine and check all hoses and fittings.

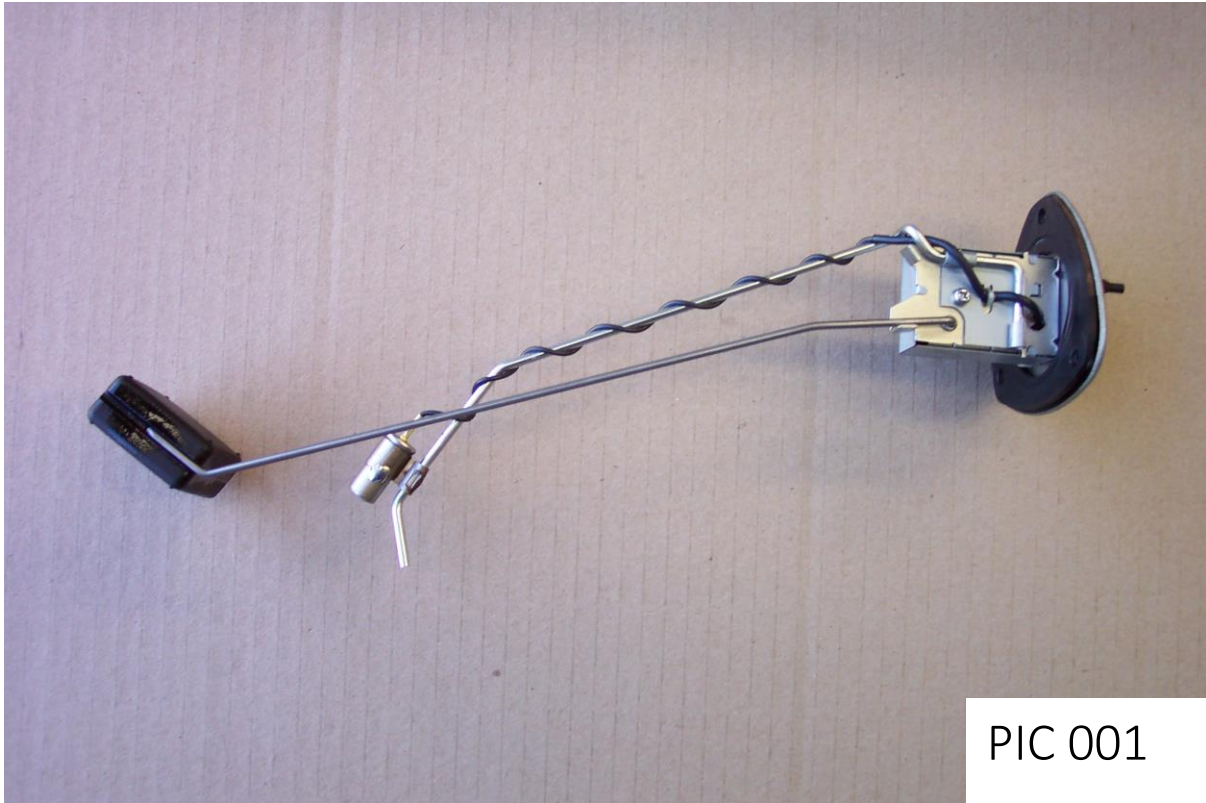


FITTING KIT CONTENTS MTMKDC

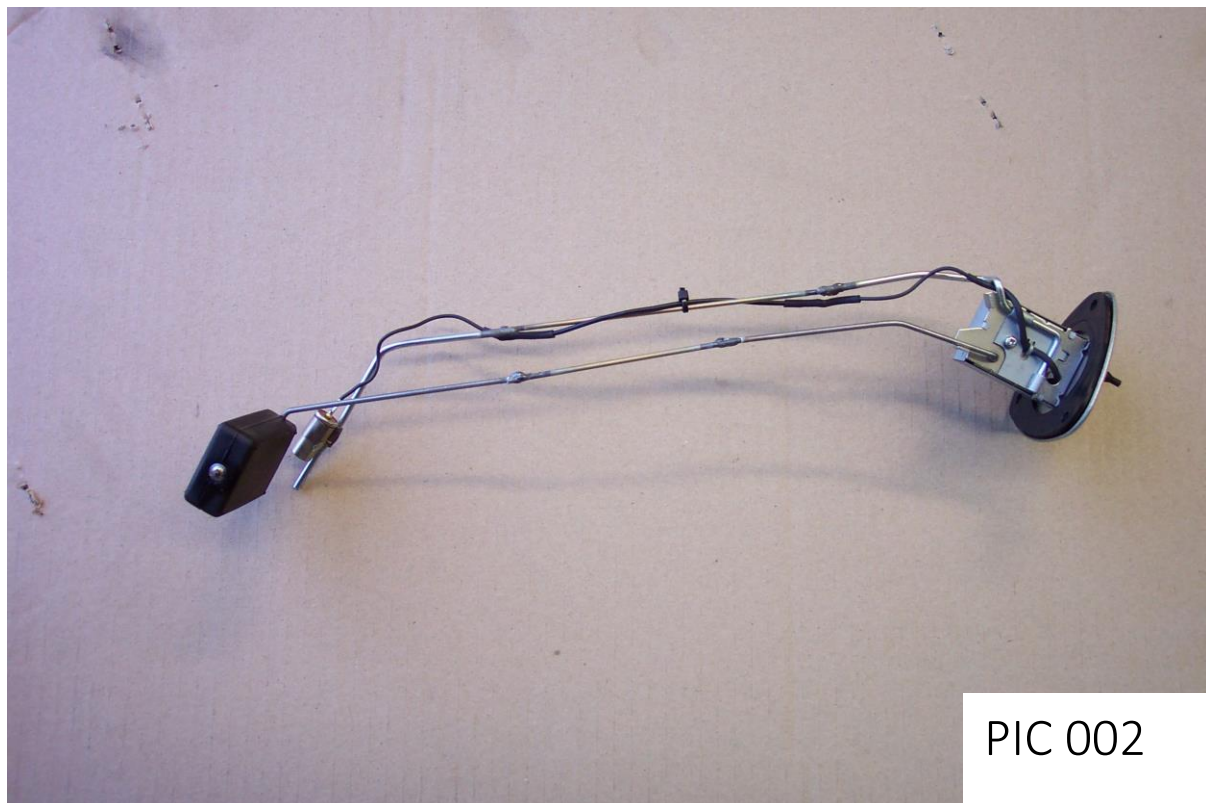
Brass	Electrical
<ul style="list-style-type: none"> ○ 1 x P3 5/8 x 1/4 (16mm hose barb straight) 	<ul style="list-style-type: none"> ○ 1 x 3mm black single core wire 200mm long ○ 2 x shrink tube 25mm long – (fuel resistant)
Bolts / Nuts	Misc Parts
<ul style="list-style-type: none"> ○ 1 x M10 x 80mm bolt ○ 1 x M10 x 90mm bolt ○ 2 x M10 Nyloc nut ○ 4 x M10 washers ○ 2 x M8 x 25mm bolt (to mount secondary bracket to front crossmember) ○ 2 x M8 x 20 wash ○ 2 x M8 spring washer ○ 9 x M5 x 10mm pan head screws ○ 6 x M5 x 12mm pan head screws ○ 15 x M5 spring washers 	<ul style="list-style-type: none"> ○ 1 x secondary bracket ○ 1 x 2.5mm rod 100mm long ○ 1 x 2.5mm rod 160mm long ○ 1 x 55mm x 19mm tube (to use as spacer on front bracket) ○ 1 x 80x50x6 rubber pad
Hose Clamps	Cable Ties
<ul style="list-style-type: none"> ○ 1 x 5/8" hose clamp ○ 1 x 1 1/2 hose clamp 	
Hose	Instructions
<ul style="list-style-type: none"> ○ 1 x 6mm fuel hose 1000mm long 	<ul style="list-style-type: none"> ○ 3 pages consisting of: ○ 1 x page fitting instructions ○ 1 x page fitting kit contents ○ 1 x drawing – INMTMKDC01

Kit Packed By _____

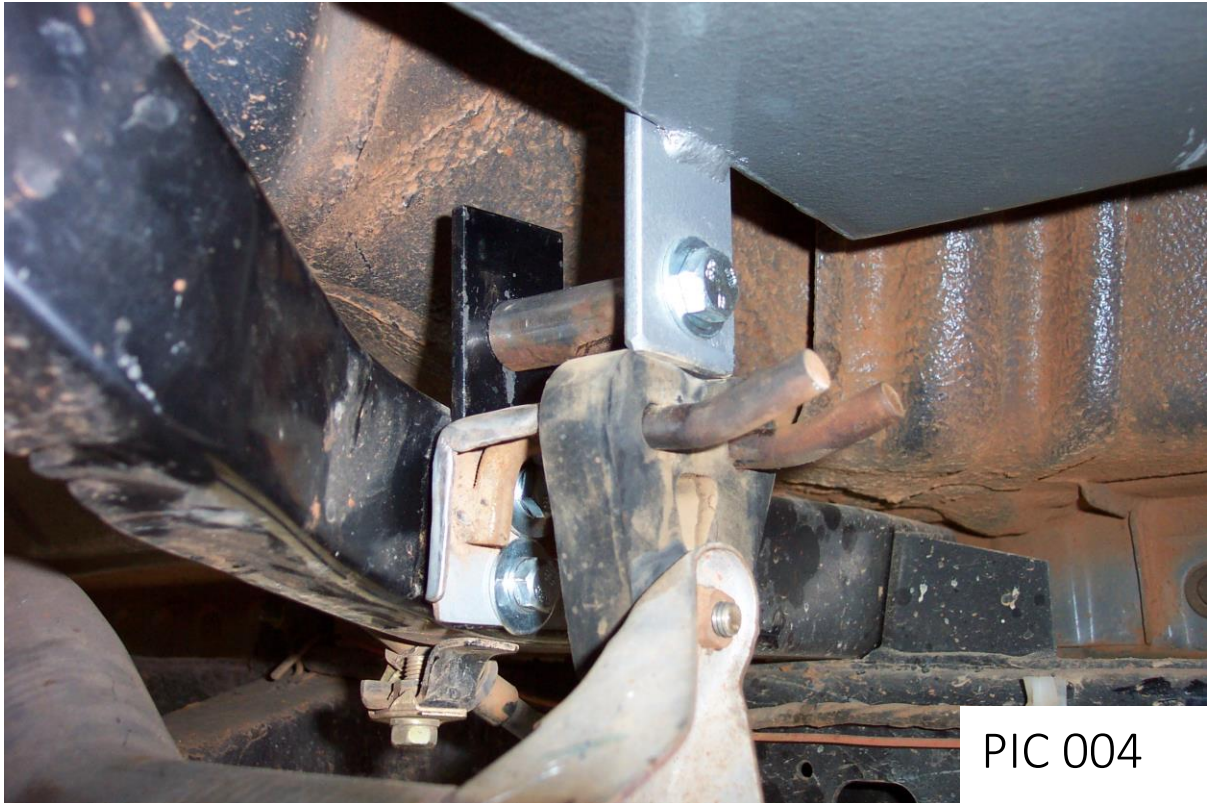
Kit Checked By _____



PIC 001



PIC 002



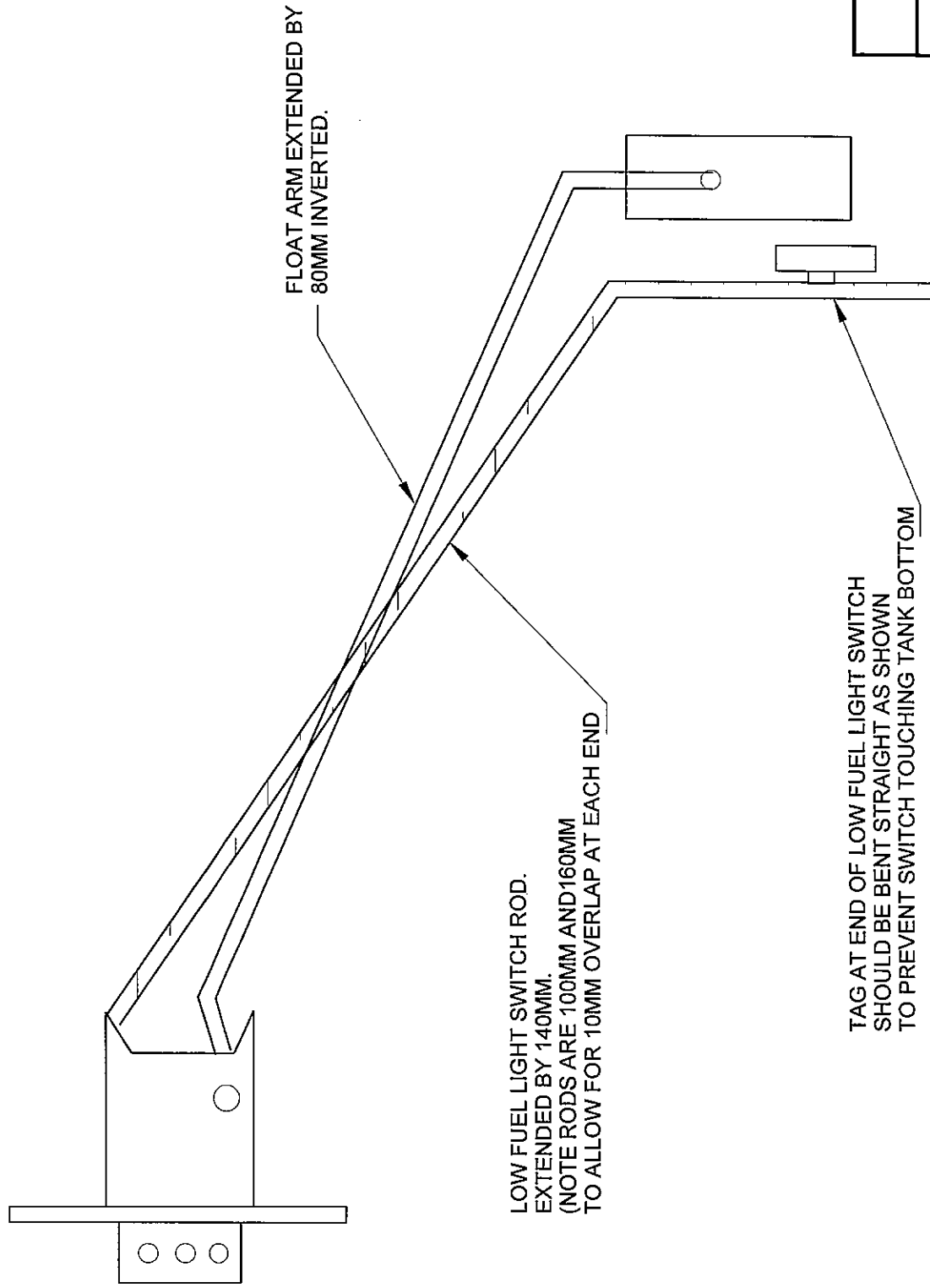
PIC 004



PIC 005

FLOAT MOD

(DRAWING NOT TO SCALE)



IN MTMKDC01

TRITON DUAL/CAB

REPLACEMENT TANK