



**Installation Instructions for MTMLDC-DL  
Mitsubishi Triton ML with Diff Lock  
116L Replacement Tank**

1. Remove the wheel arch cover and drain the tank. Disconnect the fill, fast fill and vent hoses from the filler neck. Support the tank and remove mounting nuts. Lower the tank enough to disconnect the fuel pick up and return lines as well as the sender unit wiring plug. Remove standard tank.
2. Unhook the 3 rear exhaust hanger rubbers and unbolt the rear of the drive shaft and center bearing mount. Move drive shaft to the RHS and sit it on top of the muffler. Beware of the heat shield. It is extremely sharp.
3. Unbolt the hand brake cable mount at the front of the spring eye. Trim the small locating lug from this bracket and using the small angle bracket from the kit, re-attach the cable mount to the hole in the front of the spring hanger mount with the M10 x 30mm bolt washers and nut also the original bolt and M8 nut from the kit. Loosen the cable mount that is on the tank mount chassis out rigger.
4. Remove the fuel sender unit/pick-up from the original tank. You have the option of extending the sender unit float arm by 60mm, the wire in the kit is 80mm long to allow for a 10mm overlap joint. (Be careful not to damage the unit). If you do not extend the float arm, the empty reading will be correct however the fuel gauge will not begin to move off full until the first 30-35Lt have been used. If you choose not to extend the float arm, make sure you tell the customer/end user. Fit the fuel sender unit/pick-up to the new tank using M5 x 10mm pan head screws and spring washers. Check sender operation with OHM meter: 120 OHM's @ EMPTY and 13 OHM's @ FULL. Fit rollover valve and grommet to the new tank. Jack tank into position and secure with original nuts. Check for clearances to brake lines and front spring eye bolt. Reconnect the sender unit plug and pick-up/return lines.
5. Cut 50mm from the original 6mm vent line hose and connect the roll over valve to the 6mm vent line on the filler neck. Cut 45mm from the 'straight' end of the fast fill hose and 60mm from the end with the bend (refer drawing). Screw the P3 1/2 x 1/4 hose barb straight into the tank. Connect fast fill hose using the new 1/2 clamp on

the tank end. Connect filler with the original filler hose. Refit wheel arch cover. Refit drive shaft and center bearing bolts and tighten. Refit exhaust hanger rubbers.

6. Check all clearances, hoses and fittings. Refuel the vehicle.

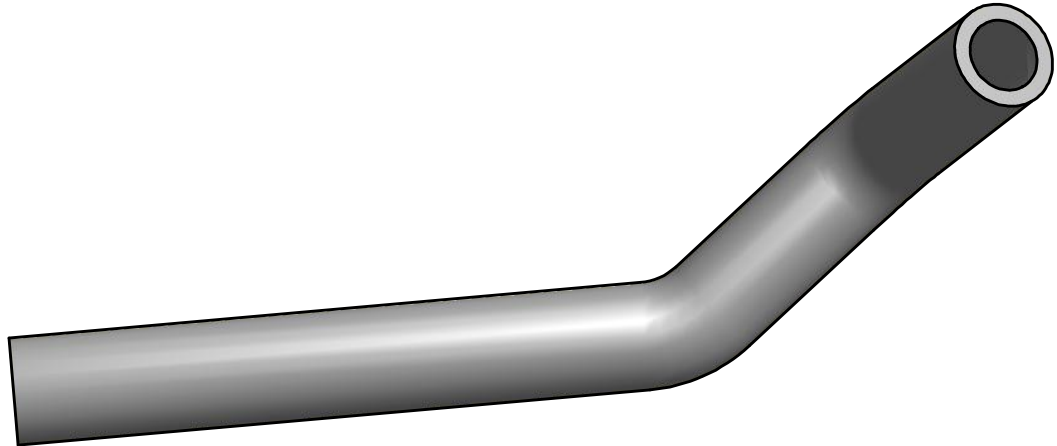
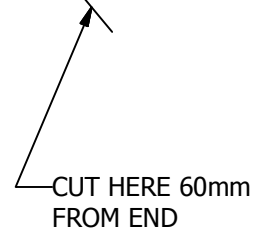
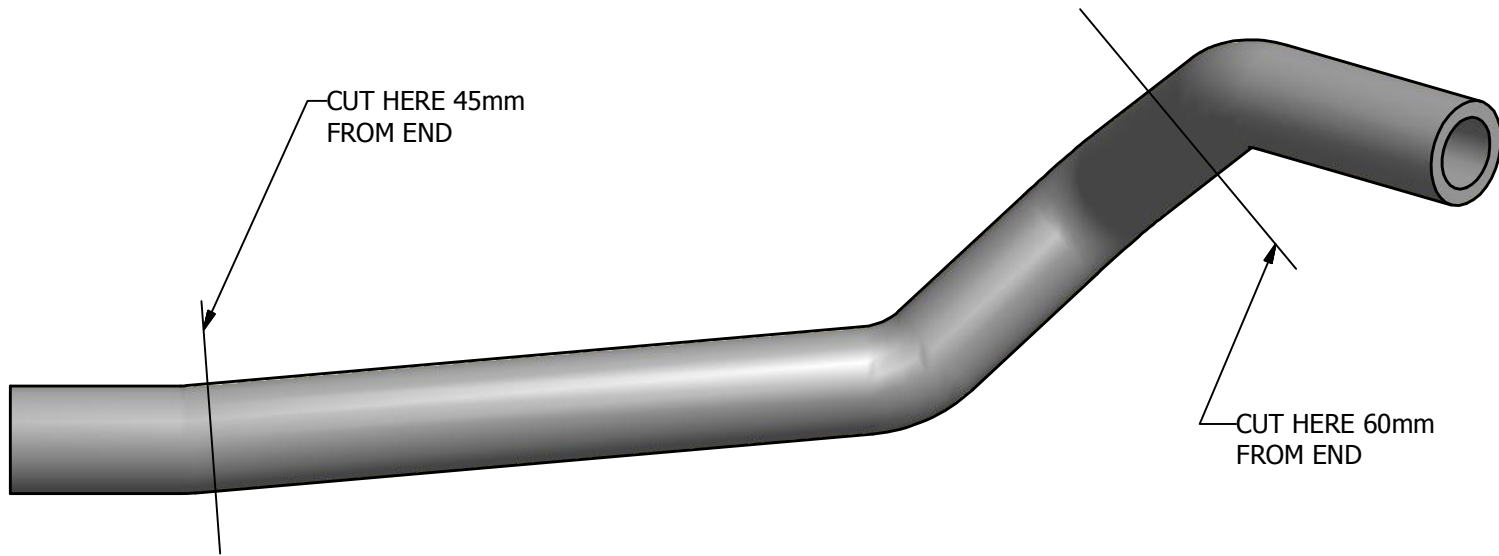


## FITTING KIT CONTENTS MTMLDC-DL

<b>Brass</b>	<b>Electrical</b>
<ul style="list-style-type: none"><li>○ 1 x P3 1/2 x 1/4 Straight</li></ul>	<ul style="list-style-type: none"><li>○</li></ul>
<b>Bolts / Nuts</b>	<b>Misc Parts</b>
<ul style="list-style-type: none"><li>○ 6 x M5 Spring washers</li><li>○ 6 x M5 x 10 Pan head screws</li><li>○ 1 x M8 Nut</li><li>○ 1 x M10 x 30 bolt</li><li>○ 1 x M10 x 25mm Flat washer</li><li>○ 1 x M10 Spring washer</li><li>○ 1 x M10 Nut</li></ul>	<ul style="list-style-type: none"><li>○ 1 x Roll over valve</li><li>○ 1 x Roll over seal</li><li>○ 1 Hand brake cable bracket</li><li>○ 1 x 2.5mm rod @ 80mm</li></ul>
<b>Hose Clamps</b>	<b>Cable Ties</b>
<ul style="list-style-type: none"><li>○ 1 x 1/2 hose clamp</li></ul>	<ul style="list-style-type: none"><li>○ 2 x 7" Cable ties</li></ul>
<b>Hose</b>	<b>Instructions</b>
	<ul style="list-style-type: none"><li>○ 4 pages consisting of:</li><li>○ 2 x page fitting instructions</li><li>○ 1 x page fitting kit contents</li><li>○ 1 x Fast Fill Hose Mod Drawing</li></ul>

Kit Packed By \_\_\_\_\_

Kit Checked By \_\_\_\_\_



THIS DRAWING REMAINS THE PROPERTY OF  
LONG RANGE AUTOMOTIVE AND IS NOT TO BE DUPLICATED  
WITHOUT PERMISSION



MTMLDC	INSTALLIATION
Mitsubishi Triton Dual cab 2006- diesel/petrol 120ltr replacement. fast fill hose modification	