



Installation Instructions for NNDCR699
Nissan Navara D22 Dual Cab 99+
120L Replacement Tank

1. Remove standard fuel tank. Remove fuel pick up/sender unit and breather valve from standard tank. Disconnect rear end of drive shaft and tie out of the way to assist in installation of tank.
2. Check float arm travel to ensure float arm does not foul on any part of the tank.
3. Fit fuel pick up/sender unit to new tank using OEM screws and new O-ring. Fit 6mm straight hose barb to expansion box on top of tank and 16mm straight hose barb into fitting on top of tank near filler neck.
4. Remove original front fuel tank mount from the crossmember and also wiring loom plastic block, (if applicable). (**NOTE:** Removal of plastic block is only applicable to model with stump fitted to chassis rail). Replace rear secondary bracket with new one supplied and mount so L section points to rear. The extreme R/H corner of the front edge of rear tank mount crossmember needs to be bent up and out of the way to clear the R/H rear corner of the tank (**Refer Diagram**). Fit new front secondary tank mounting bracket to the top of crossmember that carries the drive shaft centre bearing.
5. Install new tank and connect all hoses and fittings. Breather valve from OEM tank must be reinstalled: top of valve marked "TANK" to be connected to 6mm hose barb on expansion box.
6. Fill with fuel and check all hoses and fittings for leaks.

NOTE: USE A HIGH QUALITY SEALER ON ALL JOINS AND FITTINGS E.G. PERMATEX 3J

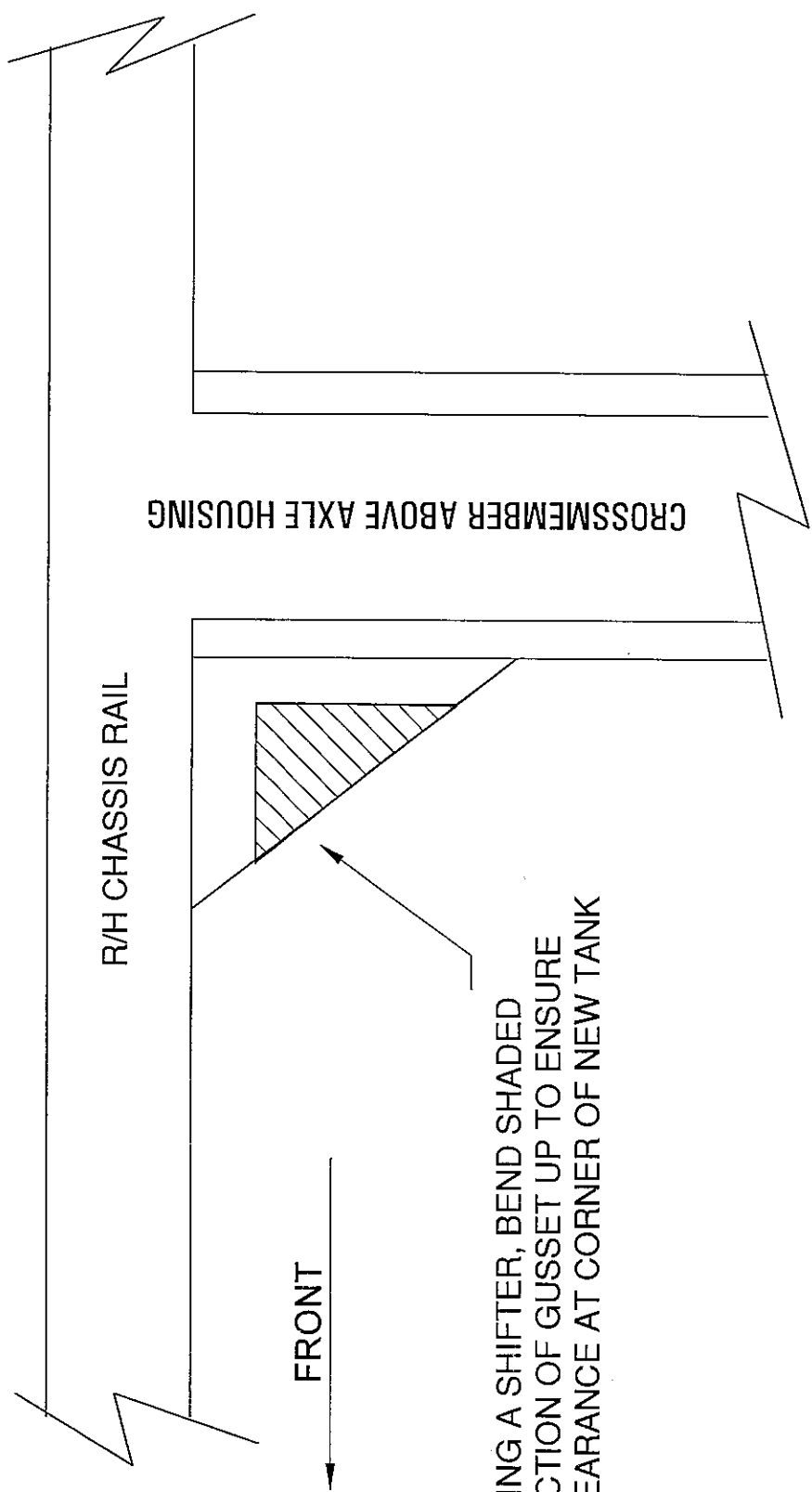


FITTING KIT CONTENTS NNDCR699

Brass:	Electrical:
<ul style="list-style-type: none"> ○ 1 x P3 1/4 x 1/8 (6mm Hose Barb Straight) ○ 1 x P3 5/8 x 1/4 (16mm Hose Barb Straight) 	
Bolts / Nuts:	Misc Parts:
<ul style="list-style-type: none"> ○ 2 x M10 Fine Nyloc Nuts ○ 2 x M10 Flat Washers 	<ul style="list-style-type: none"> ○ 2 x Secondary Tank Brackets ○ 1 x BS351 O-ring
Hose Clamps:	Cable Ties:
<ul style="list-style-type: none"> ○ 6 x 1/4" Hose Clamps ○ 2 x 1/2" Hose Clamps ○ 2 x 1 1/4" Hose Clamps 	
Sender:	Pumps & Filters:
Hose:	3 Pages of Fitting Instructions Consisting of:
<ul style="list-style-type: none"> ○ 1 x 6mm Fuel Hose @ 800mm 	<ul style="list-style-type: none"> ○ 1 x Page Fitting Instructions ○ 1 x Page Fitting Kit Contents ○ 1 x Page INNDCR.1 Diagram

Kit Packed By _____

Checked By _____



R/H CHASSIS RAIL

CROSSMEMBER ABOVE AXLE HOUSING

FRONT

USING A SHIFTER, BEND SHADED SECTION OF GUSSET UP TO ENSURE CLEARANCE AT CORNER OF NEW TANK

INNDCR.1
NAVARA D/CAB
128 - 130 Lt REP