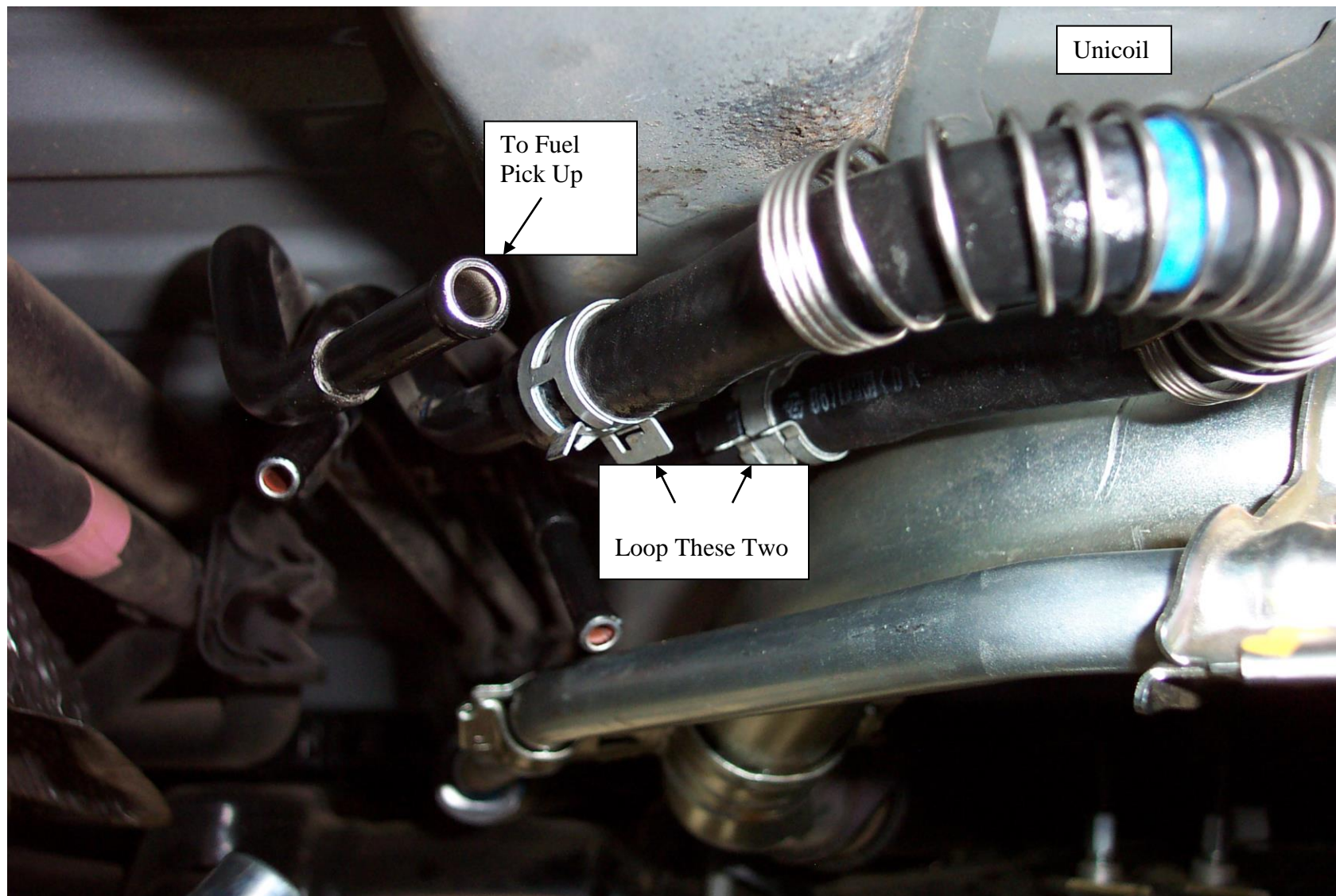




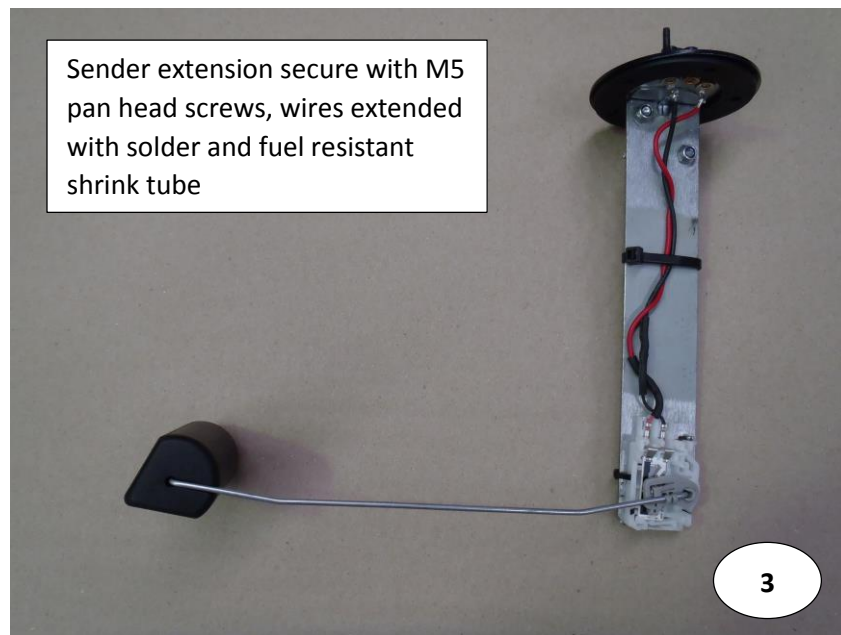
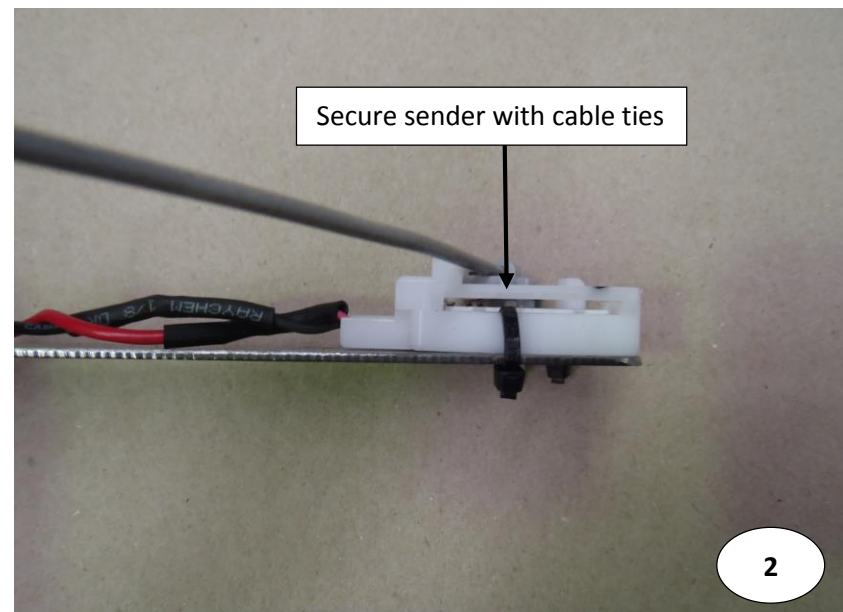
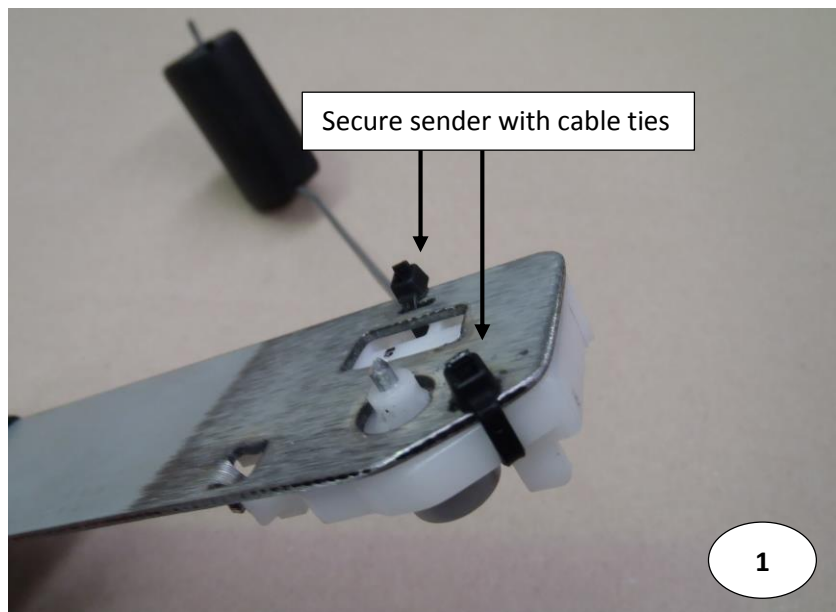
## **Installation Instructions for TLC200RR Toyota Landcruiser 200 Series 170lt Sub Replacement Tank**

1. Remove the R/H wheel arch cover. Remove the spare wheel and the wheel carrier. Drain and remove the Original tank and straps.
2. Using the Mounting bar for reference, drill out the matching holes in the chassis rail to 8.5mm and 10.5mm and bolt mounting bar in place using bolts with straps attached, washers and Nyloc nuts. The 5mm bar end packers are for the forward hole on both the left hand and right hand side of the mounting bar.
3. Fit grommet and rollover valve to tank and attach 550mm length of 6mm fuel hose to this valve and point forward. Screw the P6 1/4 x 1/8 Elbow into the top of the tank and point forwards, fit the original 6mm line with the pink band to this elbow. Screw the P3 5/16 x 1/4 straight fitting into the front of the tank, this is the fuel pickup, use the original 8mm hose with the orange band to attach to the pickup. The 2 remaining P3 5/8 x 3/8 straight fittings are the fast fill vent fittings.
4. **SENDER UNIT NOTE: There are two different sender units, 2007-11/2014 and 12/2014 On. The kit contains both early and late sender unit extension brackets and float arms. Use the shorter of the two float arms for the late type sender.**  
Using the correct bracket and float arm, modify the Sender unit by cutting the original metal frame 35mm from the sealing face, and bolting the new Sender unit extension bracket in place with the M5 x 8mm Pan head screws and nyloc nuts. Lengthen the sender unit wires by soldering and using Fuel resistant heat shrink tube. Transfer float from original float arm to the new float arm. Be careful with the retaining clip on the early model sender. On the late model you need to peen the end of the wire to keep the washer in place. The sender unit clips in place on the early type but requires the sender to be secured with two cable ties as per Fig 1 & 2
5. Using the Original hose with the blue bands and the Unicoil from the kit, loop the two 8mm lines that are on the right hand side of the vehicle (refer picture).

6. Slip the M10 U bolts over the cross member and jack the tank into position. (Don't forget to connect the sender unit). Secure the front with M10 Nyloc nuts and washers and the rear with M12 Bolts Heavy duty washers and Nyloc nuts.
7. Connect the 6mm hose from the rollover valve to where the green 6mm line came from (This line goes into a valve that pushes into a grommet in the under body). Connect the Pink 6mm line to the remaining 6mm fitting and the Orange 8mm hose to the pickup line. Connect original fast fill vent hoses and cut 35mm from the original fill hose. Check over all hoses and fittings. Replace wheel arch covers.

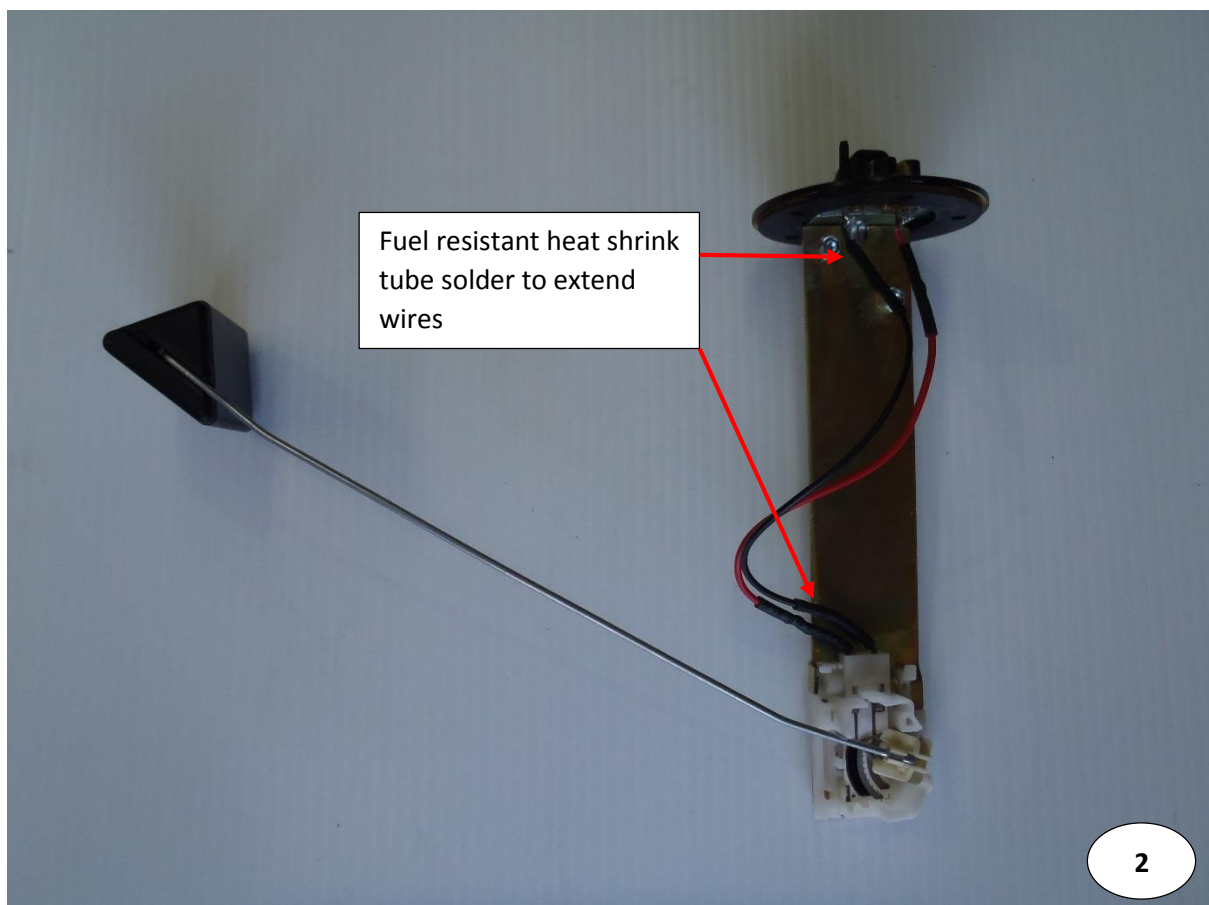
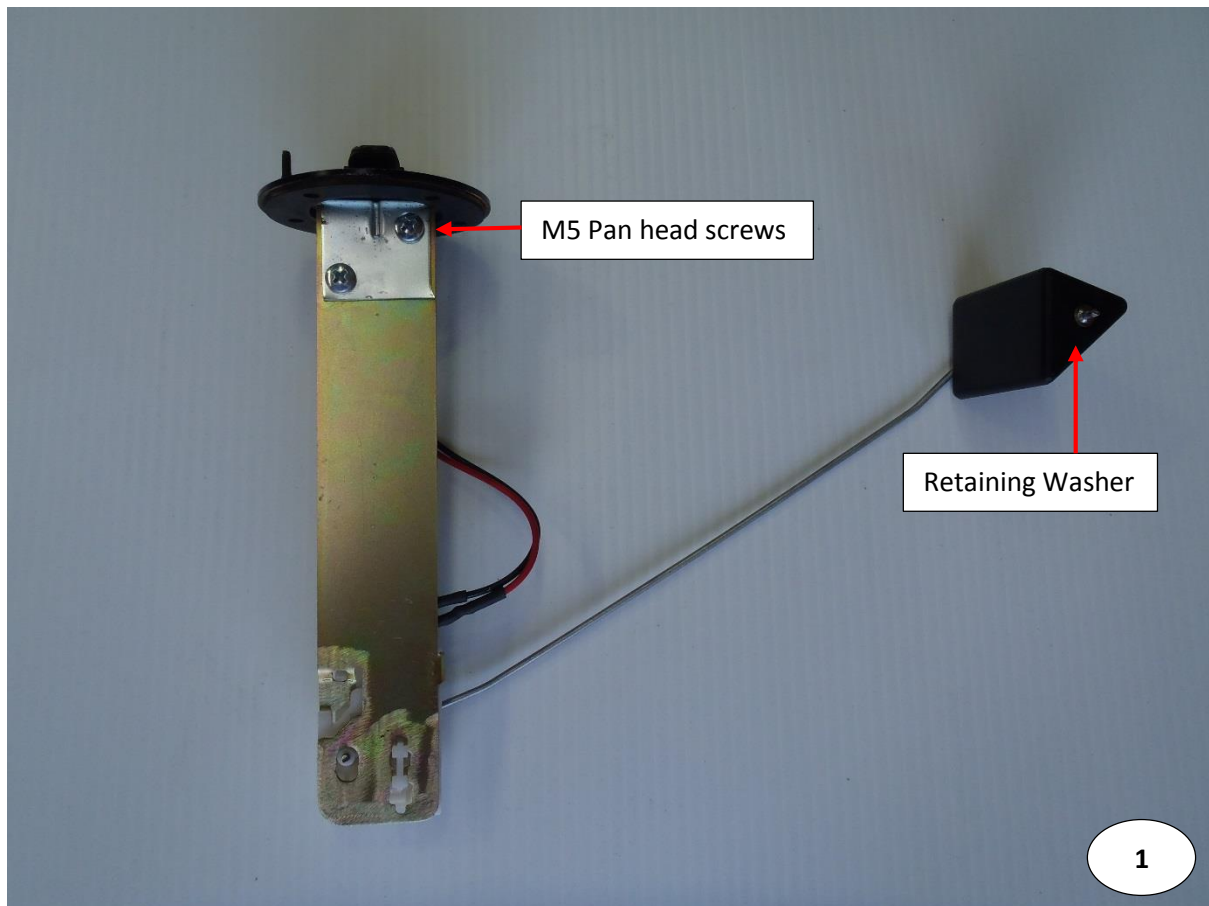


TLC200RR Hose Link





## TLC200RR SENDER - EARLY





## FITTING KIT CONTENTS TLC200RR

Brass	Electrical
<ul style="list-style-type: none"> <li>○ 1 x P3 5/16 x 1/4 8mm Straight</li> <li>○ 2 x P3 5/8 x 3/8 16mm Straight</li> <li>○ 1 x P6 1/4 x 1/8 6mm Elbow</li> </ul>	<ul style="list-style-type: none"> <li>○ 1 x Red 2.5mm single core @ 150mm</li> <li>○ 1 x Black 2.5mm single core @ 150mm</li> <li>○ 2 x fuel resistant shrink tube @ 30mm</li> </ul>
Bolts / Nuts	Misc Parts
<ul style="list-style-type: none"> <li>○ 2 x M5 Nyloc nuts</li> <li>○ 2 x M5 x 8mm Pan head screws</li> <li>○ 2 x M8 x 20mm washers</li> <li>○ 2 x M8 Nyloc nuts</li> <li>○ 10 x M10 x 25mm washers</li> <li>○ 10 x M10 Nyloc nuts</li> <li>○ 3 x M10 x 85mm U bolts @ 100mm</li> <li>○ 4 x M12 Heavy Duty washers</li> <li>○ 2 x M12 x 30mm bolts</li> <li>○ 2 x M12 Nyloc nuts</li> </ul>	<ul style="list-style-type: none"> <li>○ 1 x 5/16 Uni coil</li> <li>○ 1 x roll over valve</li> <li>○ 1 x roll over valve grommet</li> <li>○ 2 x M10 x 30mm bolt with 5mm x 300mm strap</li> <li>○ 2 x M10 x 30mm bolt with 5mm x 150mm strap</li> <li>○ 2 x M8 x 30mm bolt with 5mm x 150mm strap</li> <li>○ 2 x 5mm bar end packers</li> <li>○ 1 x rear mounting bar</li> <li>○ 1 x float arm (early)</li> <li>○ 1 x float arm (late)</li> <li>○ 1 x sender unit extension bracket (early)</li> <li>○ 1 x sender unit extension bracket (late)</li> </ul> <p>5 Pages of Fitting Instructions consisting of:</p> <ul style="list-style-type: none"> <li>○ 1 x page fitting instructions</li> <li>○ 1 x page fitting kit contents</li> <li>○ 1 x TLC200RR Hose Link Picture</li> <li>○ 2 x TLC200RR Sender Mod Pictures</li> </ul>
Hose	Cable Ties
<ul style="list-style-type: none"> <li>○ 1 x 6mm Hose @ 550mm</li> </ul>	<ul style="list-style-type: none"> <li>○ 1 x 7" cable ties</li> <li>○ 2 x 100mm cable ties</li> </ul>

Kit Packed By \_\_\_\_\_

Checked By \_\_\_\_\_