



Installation Instructions for  
TLCFJCRURR  
Toyota FJ Cruiser  
115lt Replacement Tank

Updated 10/22

1. Remove the std tank from the vehicle. Be careful when you lower the tank as the wiring harness from the pump assembly is only very short. Remove the Fuel pump / Sender unit assembly from the tank. Trim the locating tab from the pump housing flange. Unclip the float arm from the assembly and extend the horizontal section (Near the float) of the float arm by 40mm, the rod in the kit is 60mm long to allow for a 10mm overlap on each join. To ensure that the low fuel warning light does not come on to early, after you have completed the float arm extension make sure that the float touches the bottom when on the empty limit stop (**Refer Pic 1**).
2. With a sharp blade trim the coupling ends from the fuel pick up and return lines. Use the coupling ends and the two lengths of 8mm EFI hose and EFI clamps to make up new lines. Trim the coupling end from the vent line on the OE tank and connect to the 150mm length of 8mm hose.
3. Fit the Fuel pump assembly to the tank with the float arm and the pickup and return lines pointing to the RHS. Secure the unit with the new O/Ring, hold down ring and M5 x 8mm cap screws. Fit the grommet and rollover valve to the top of the tank also pointing to the RHS. Fit the 150mm length of 6mm hose with the OE coupling to this valve. Screw the P3 1/2" x 3/8" straight fitting into the top of the tank. Fit the new 1300mm EFI hoses with the OE couplings to the fuel pump assembly and cover with the 16mm Conduflex.
4. Jack the tank into position and feed the pickup and return lines over the cross member and connect to the OE fuel lines. Connect the Sender / Pump wiring. Check the position of the tank to the brake lines on the LHS front of the tank and ensure clearance.
5. Drill the three front mounting holes (You will have to drop the drive shaft to drill the RH front hole). Secure the RH Rear of the tank with the M10 x 80mm bolt using the tube spacer and Nyloc nut and washers. LH Rear with the OE strap bolt. Use the M12 x 50mm bolt, cup washer and rubber along with the 35mm x 55mm plate on the RH front, and the two M12 x 50mm Bolts with the washers and straps attached along

with the cup washers and rubbers and H/D washers for the LH Front. **(Refer Pic 2 & 3)**

6. Connect the filler with the OE fill hose. Connect the Fast fill vent with the new 320mm length of 12mm hose. Connect the Roll over valve vent line to the OE vent line. Cable tie the pickup and return lines neatly in place.
7. Check over all hoses and fittings. Refill with fuel.



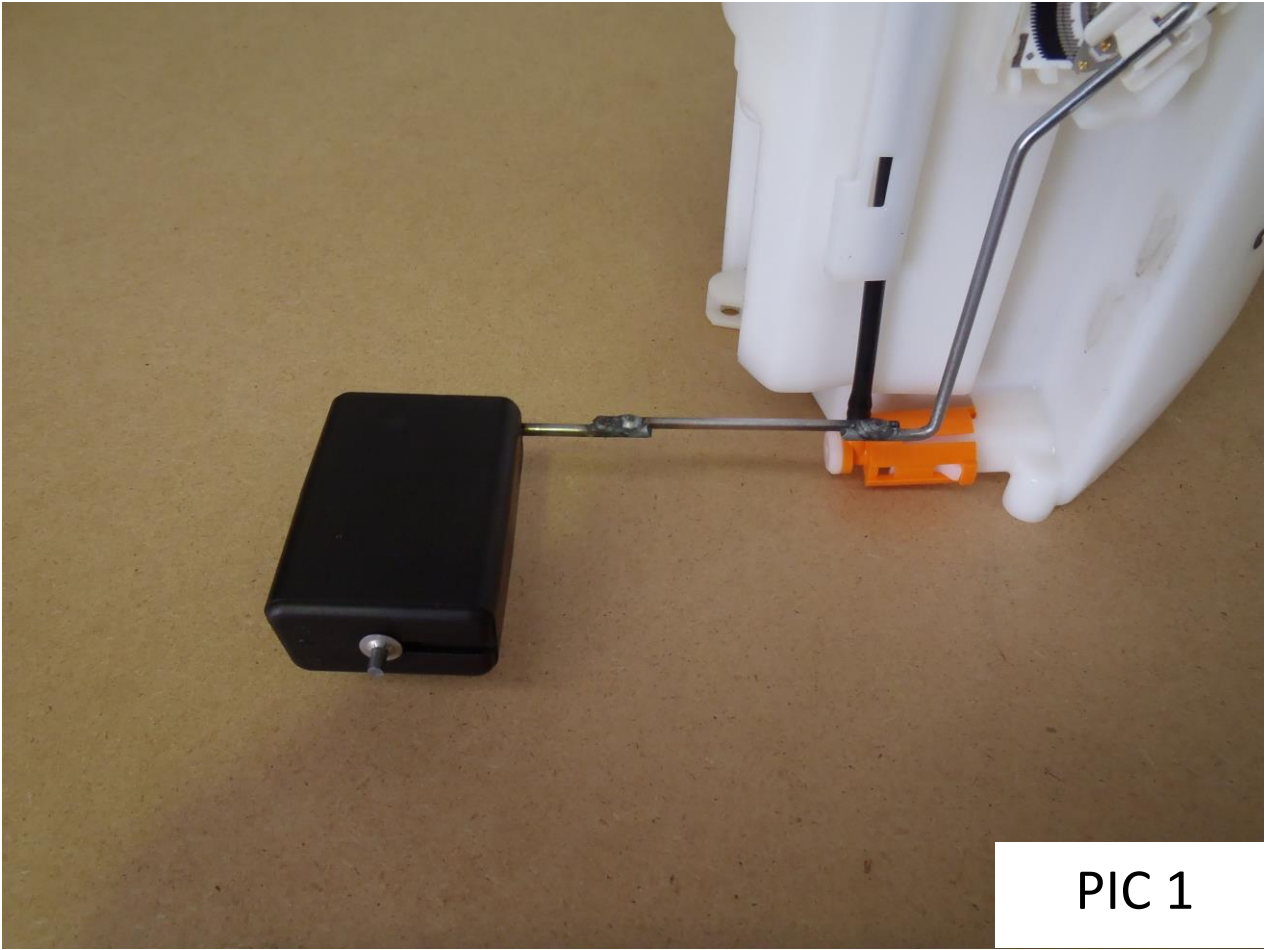
## FITTING KIT CONTENTS TLCFJCRURR

Updated 10/22

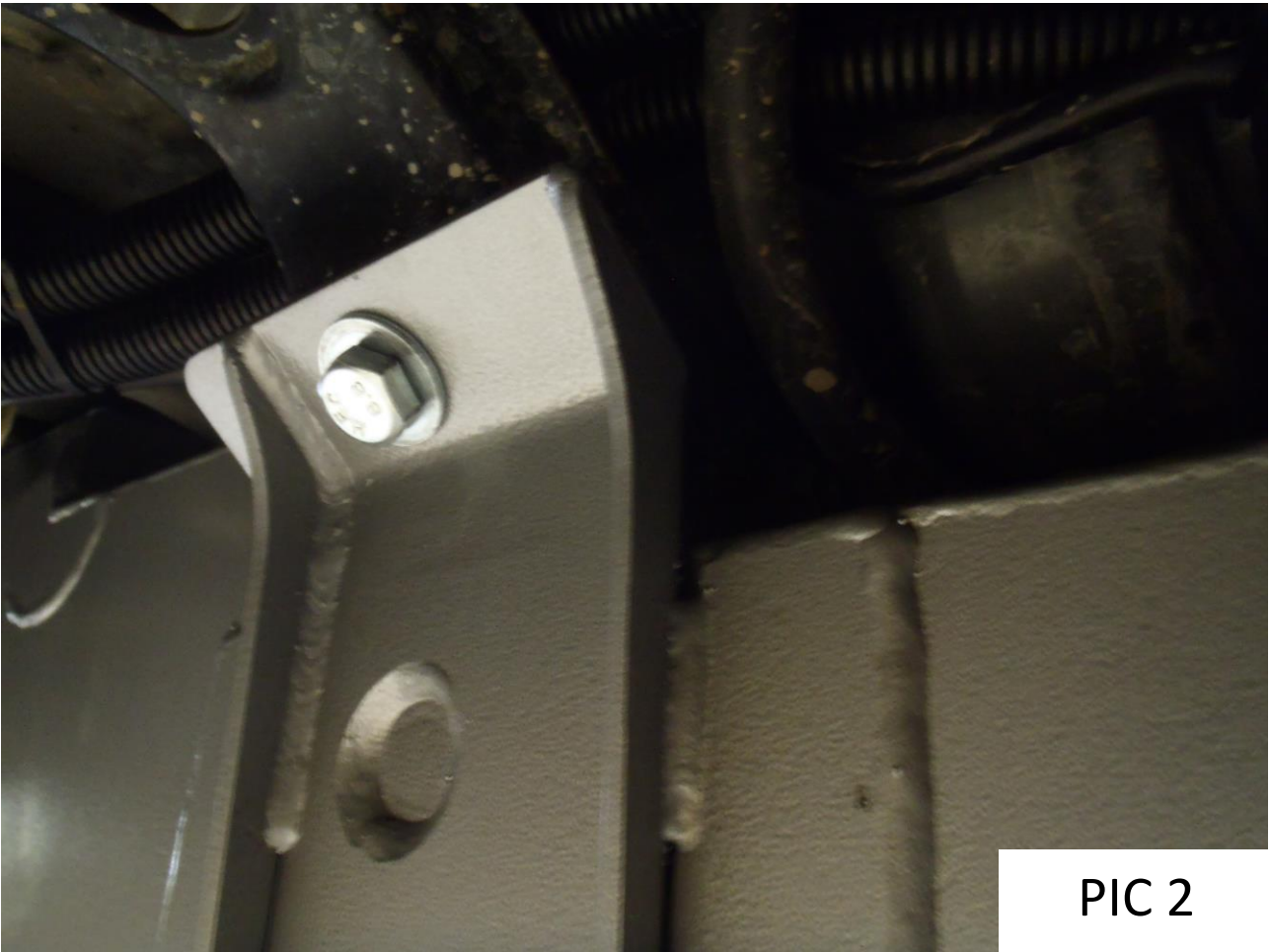
<b>Brass</b>	
<ul style="list-style-type: none"> <li>○ 1 x P3 1/2 x 3/8 Hose Barb Straight</li> </ul>	
<b>Bolts / Nuts</b>	<b>Misc Parts</b>
<ul style="list-style-type: none"> <li>○ 1 x M10 X 80mm Bolt</li> <li>○ 1 x M12 x 50 Bolt</li> <li>○ 3 x M12 X HD Washers</li> <li>○ 2 x M10 x 25mm Washers</li> <li>○ 1 x M10 Nyloc Nut</li> <li>○ 3 x M12 Nyloc Nuts</li> <li>○ 6 x M5 x 8mm Cap Screws</li> <li>○ 6 x M5 x 10mm Washers</li> </ul>	<ul style="list-style-type: none"> <li>○ 1 x J5360058 Roll Over Valve</li> <li>○ 1 x LRA-FTG Grommet</li> <li>○ 1 x 2.5mm rod @ 60mm</li> <li>○ 1 x Pump Hold Down Ring</li> <li>○ 1 x BS357 O/Ring</li> <li>○ 1 x 16mm x 45mm Tube Spacer</li> <li>○ 2 x M12 x 50mm Bolt with Washer &amp; Strap Welded</li> <li>○ 1 x 35mm x 55mm x 4mm Profile Cut Plate</li> <li>○ 3 x M12 Cup Washers</li> <li>○ 3 x M12 Cup Washer Rubbers</li> </ul>
<b>Hose</b>	<b>Cable Ties</b>
<ul style="list-style-type: none"> <li>○ 1 x 6mm Fuel Hose @ 150mm</li> <li>○ 2 x 8mm EFI Hose @ 1300mm</li> <li>○ 1 x 12mm Fuel Hose @ 320mm</li> <li>○ 2 x 16mm Conduflex @ 1200mm</li> </ul>	<ul style="list-style-type: none"> <li>○ 4 x 7" Cable Ties</li> </ul>
<b>Hose Clamps</b>	<b>4 Pages Fitting Instructions Consisting of:</b>
<ul style="list-style-type: none"> <li>○ 2 x 1/2" Hose Clamps</li> <li>○ 6 x 5/16 EFI Hose Clamps</li> <li>○ 2 x 1/4" Hose Clamps</li> </ul>	<ul style="list-style-type: none"> <li>○ 2 x Pages Fitting Instructions</li> <li>○ 1 x Page Fitting Kit Contents</li> <li>○ 1 x Page Fitting Instruction Pictures</li> </ul>

Kit Packed By \_\_\_\_\_

Checked By \_\_\_\_\_



PIC 1



PIC 2



PIC 3