



**Installation Instructions for LDEF110-RH
Landrover Defender 110
65L Auxiliary Tank**

This auxiliary tank fits on the RHS of the vehicle between the front and rear axle. The system operates via a fuel transfer system where by the fuel is pumped from the auxiliary tank into the main tank at the flick of a switch. The tank is fitted with a fuel level sender unit. Fuel is transferred via an electric pump that will pump fuel from the auxiliary tank into the OEM tank. A combination switch/gauge will be located into a suitable position in the dash. When the switch is in operation an **ORANGE** light will be ON, indicating that the transfer pump is in operation. A series of lights will also indicate fuel level. All **GREEN** lights on showing FULL, one **RED** flashing light showing EMPTY.

(DO NOT OPERATE TRANSFER PUMP WITH NO FUEL IN AUXILIARY TANK OR PUMP FAILURE WILL OCCUR).

1. Run Twin core cable from under vehicle to inside cab and carry out wiring as per wiring diagram.
2. Screw all fittings and fuel level sender into auxiliary tank as per diagram.
3. Fit tank mounting brackets to front and rear chassis out riggers. These brackets locate to original holes in the chassis out riggers.
4. Lift tank into position - remember to connect sender unit wire - check clearances, drill remaining holes and bolt tank into position. **NOTE:** Exercise caution when drilling hole for centre inside mount, as there is a wiring loom inside the chassis rail.
5. Fit filler neck to vehicle in short 1/4 panel section just behind rear driver's side door. Hole-saw 25mm hole in rear chassis out rigger for fast fill vent line to pass through.
6. Connect fill pipe to filler neck and tank, fit fuel transfer pump and filter, complete remaining connection of fuel lines and wiring.
7. Fill with fuel and check fuel transfer pump operation.



FITTING KIT CONTENTS LDEF110-RH

Updated 12/23 - TL

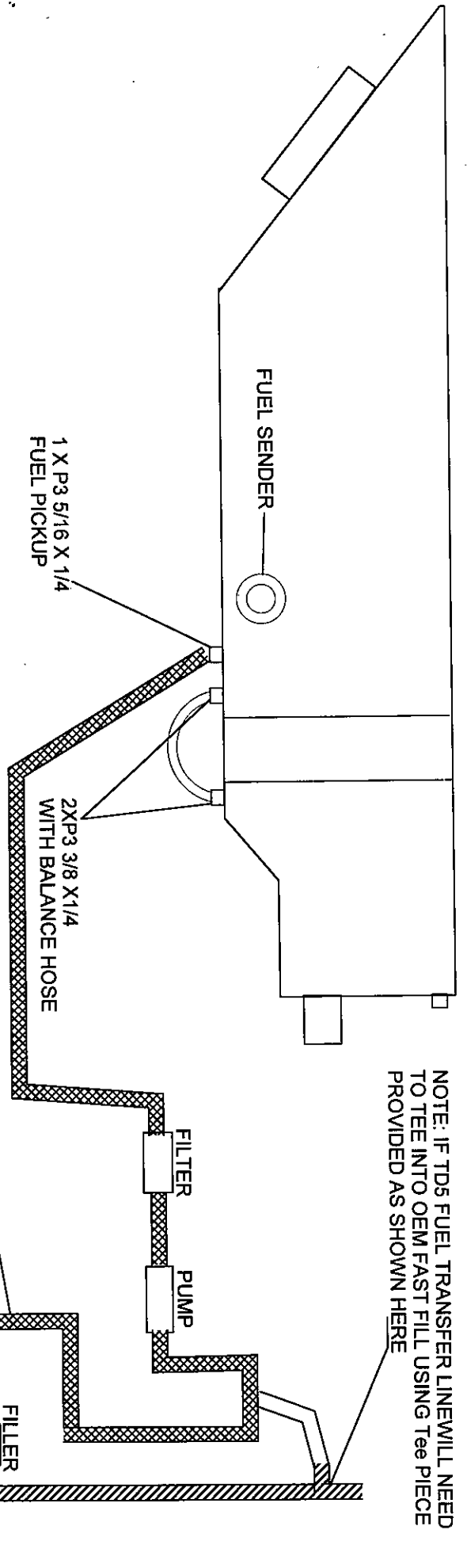
Updated 12/23 - TL	
<p>Brass:</p> <ul style="list-style-type: none"> ○ 1 x P3 1/2 x 1/4 12mm Straight ○ 1 x P6 1/2 x 1/4 12mm Elbow for Fast Fill Vent on Filler Neck ○ 2 x P3 3/8 x 1/4 10mm Straight ○ 1 x P3 5/16 x 1/4 8mm Straight <p>TD5 Add:</p> <ul style="list-style-type: none"> ○ 1 x 19 x 8mm T-Piece 	<p>Electrical:</p> <ul style="list-style-type: none"> ○ 1 x Two Core Wire @ 4000mm ○ 1 x LRA-PG210 Switch/Gauge ○ 2 x Red Insulated Terminals ○ 2 x Male Terminals ○ 3 x 6mm Earth Eye
<p>Bolts / Nuts:</p> <ul style="list-style-type: none"> ○ 6 x M10 x 30mm Bolts ○ 6 x M10 Nyloc Nuts ○ 10 x M10 x 25mm Washers ○ 4 x M8 x 25mm Bolts ○ 5 x M8 Nyloc Nuts ○ 6 x M8 x 25mm Washers ○ 3 x Secondary Brackets (suit RHS) ○ 1 x M8 x 100mm Bolt ○ 5 x M5 x 10mm Pan Head Screws ○ 2 x M10 x 20mm Washers ○ 3 x M8 x 20mm Washers ○ 1 x M8 x 30mm Washer 	<p>Misc Parts:</p> <ul style="list-style-type: none"> ○ 1 x Filler #FNLD110 (RHS) ○ 1 x Locking Cap ○ 1 x Large Grommet for Filler
<p>Hose Clamps:</p> <ul style="list-style-type: none"> ○ 10 x 1/4" Hose Clamps ○ 2 x 1/2" Hose Clamps ○ 2 x 1 1/2" Hose Clamps <p>TD5 Add:</p> <ul style="list-style-type: none"> ○ 2 x 5/8 Hose Clamp 	<p>Cable Ties:</p> <ul style="list-style-type: none"> ○ 10 x 7" Cable Ties ○ 5 x 11" Cable Ties

Sender:	Pumps & Filters:
<ul style="list-style-type: none"> ○ 1 x 0-90 OHM 500mm Earth Lead 	<ul style="list-style-type: none"> ○ 1 x Fuel Pump ○ 1 x Z14K Filter
Hose:	5 Pages of Fitting Instructions Consisting of:
<ul style="list-style-type: none"> ○ 1 x 44mm Fuel Hose @ 100mm ○ 1 x 10mm Fuel Hose @ 450mm ○ 1 x 12mm CMP Hose @ 500mm ○ 1 x 8mm Fuel Hose @ 1400mm <p>TD5 Add:</p> <ul style="list-style-type: none"> ○ 1 x 8mm Fuel Hose @ 500mm 	<ul style="list-style-type: none"> ○ 1 x Page Fitting Instructions ○ 2 x Pages Fitting Kit Contents ○ 1 x Page WDSGPG210 Diagram ○ 1 x Page INLDEF110-RH

Kit Packed By _____

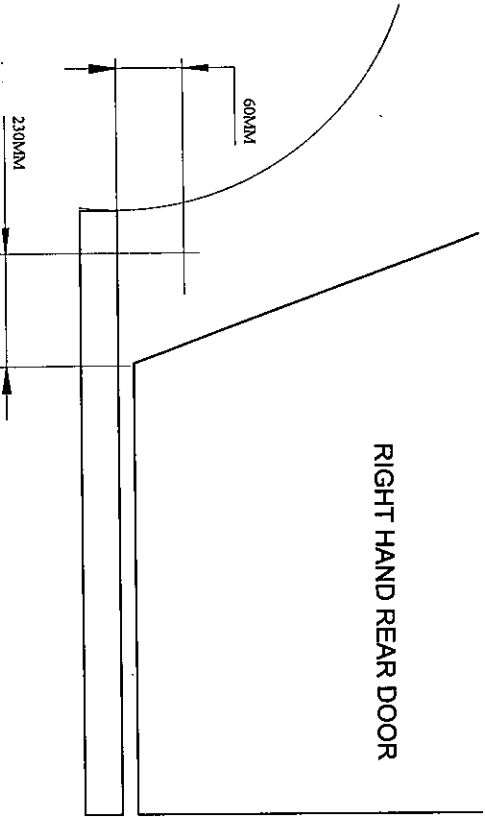
Checked By _____

DIAGRAM A

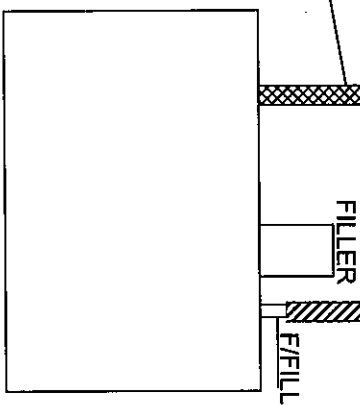


P3 1/2 X 1/4
FAST FILL FROM FILLER NECK

DIAGRAM B
SUGGESTED REFERANCES POINT TO
HOLE SAW NEW FILLER HOLE



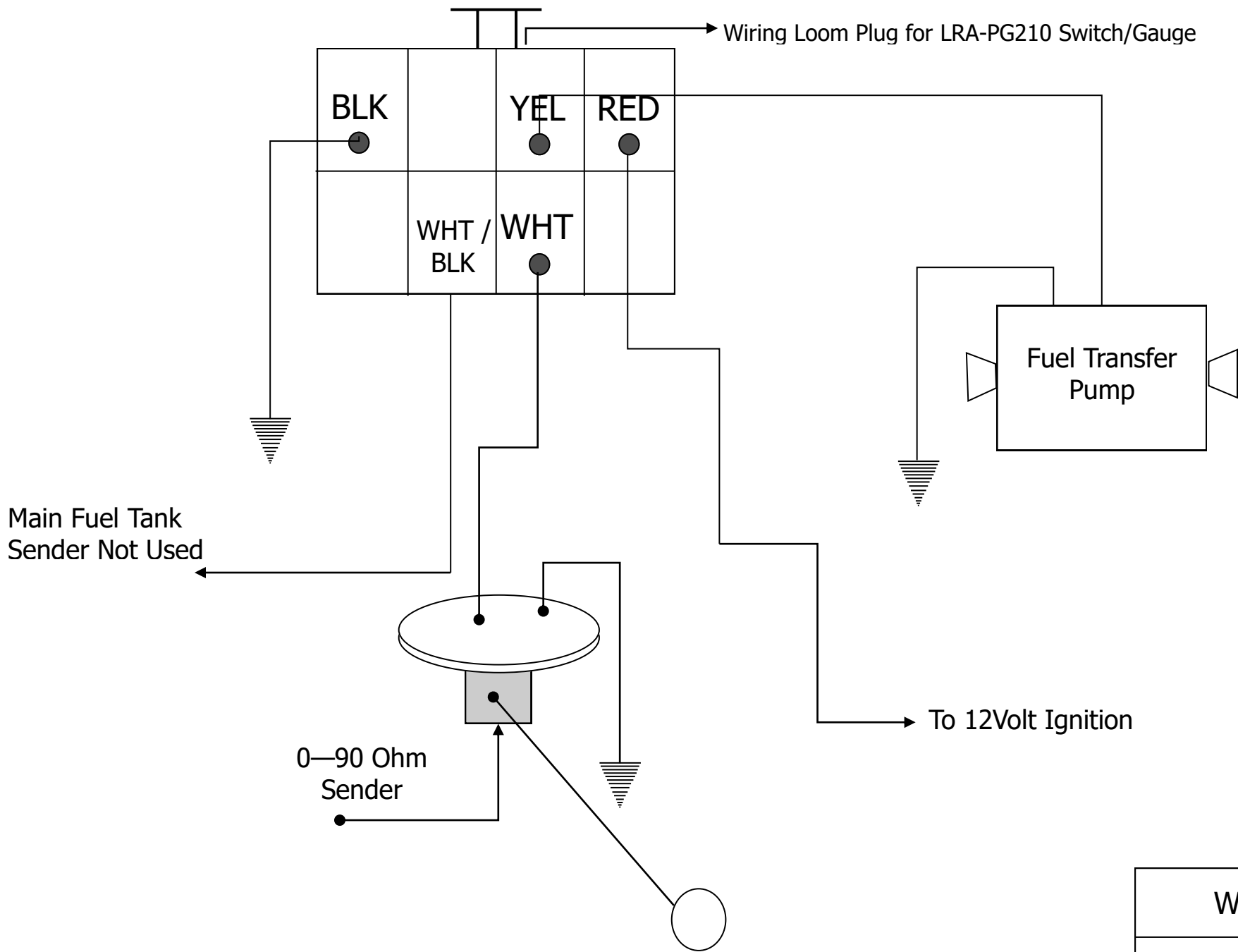
IF TDI- REMOVE PLUG FROM ORIGINAL
TANK AND CONNECT PUMP TRANSFER
LINE AS SHOWN HERE



INLDEF110

LANDROVER DEF 110 TD5/300 TDI

65 - 70 Lt AUX TANK



WDSGPG210