



**Installation Instructions for NNDCRNP300-MY21
Nissan Navara NP300 D/Cab 12/20+
135lt Replacement Tank**

1. Remove the standard fuel tank shield from under the tank. Disconnect the Filler and fast fill hoses from the tank. UN clip the breather vent line from the chassis rail. Loosen the tank straps and carefully lower the tank until you can access the pump assembly. Disconnect the fuel lines and unplug the wiring from the pump. Remove tank from vehicle.
2. Cut the cable tie from the cross member on the pump wiring to give it some more length for easier refit.
3. Modify the rear tank strap locating hole as per drawing (needs to be made 36mm wide at the lower part of the slot) Ref Drawing.
4. On the LHS Chassis rail unclip the ABS wiring from the small bracket. Drill a new 11mm hole closer to the chassis rail and cut of the excess, secure the ABS wiring grommet to the new hole. This will allow for more clearance to the side of the new tank. **(Ref Pic 1 & 2)**
5. Remove and discard the upper tank cover shield that is mounted to the front cross member.
6. Cut 40mm from the STD filler neck and 110mm from the first 90 degree bend on the fast fill vent tube. Clean up the body sealer on both these tubes to allow for a good sealing surface for the hoses. (Note, You cannot get the filler neck out of the body to do this you must do this with the neck in place.)
7. Remove the fuel pump / sender assembly from the original tank. Unclip the float arm from the unit and extend the horizontal section by 40mm (The rod in the kit is 60mm long to allow for a 10mm overlap on each joint). Clip the float arm back into the assembly and check the full to empty range 46 OHM @ Full 282 OHM @ empty. **(Ref Pic 3)**
8. Refit the fuel pump / sender assembly to the new tank with new BS 357 O Ring hold down ring and M5 x 8mm Cap Screws and washers.

9. Trim the vent line bayonet coupling from the original vent line and fit this to the 640mm length of 6mm hose. Clip this onto the pump assembly. Fit the Roll over grommet and valve to the tank pointing out to the RHS, Connect the P14 6mm Tee branch to the valve with 135mm of 6mm hose. Cover the Fuel pick up and return lines with the 300mm lengths of CF10 Conduflex.
10. Glue the 65mm x 300mm to the underside of the front cross member and the 65mm x 330mm to the underside of the rear cross member where the tank will pull up to.
11. Cut 90mm from the Fast fill hose and fit to the fast fill vent tube. Use the 90mm length of 35mm fuel hose to fit to the filler tube. Lock the new rear strap in place and carefully bend down to allow the tank to be jacked in place.
12. Jack the tank into position while guiding it onto the fill and fast fill hoses. Connect the fuel pump plug and fuel pick up and return lines. Secure the tank with the new straps, reinforcing plates with the original bolts.
13. Connect the 6mm vent line from the pump assembly by running it over the cross member to the P14 6mm Tee on the line that comes from the roll over valve. The other side of the tee goes to the vent valve with the 200mm length of 6mm hose then into the 50mm of 6mm hose and connect this to the end valve stop and drill a 12mm hole in the cross member to clip this into. **(Ref Pic 4)**
14. Use the P clip and the TEK screw to secure the line to the cross member above the tank.
15. Remove the heat shield from the STD tank and refit to the new tank using the original clips.
16. Check over all hose and fittings and refill with fuel.

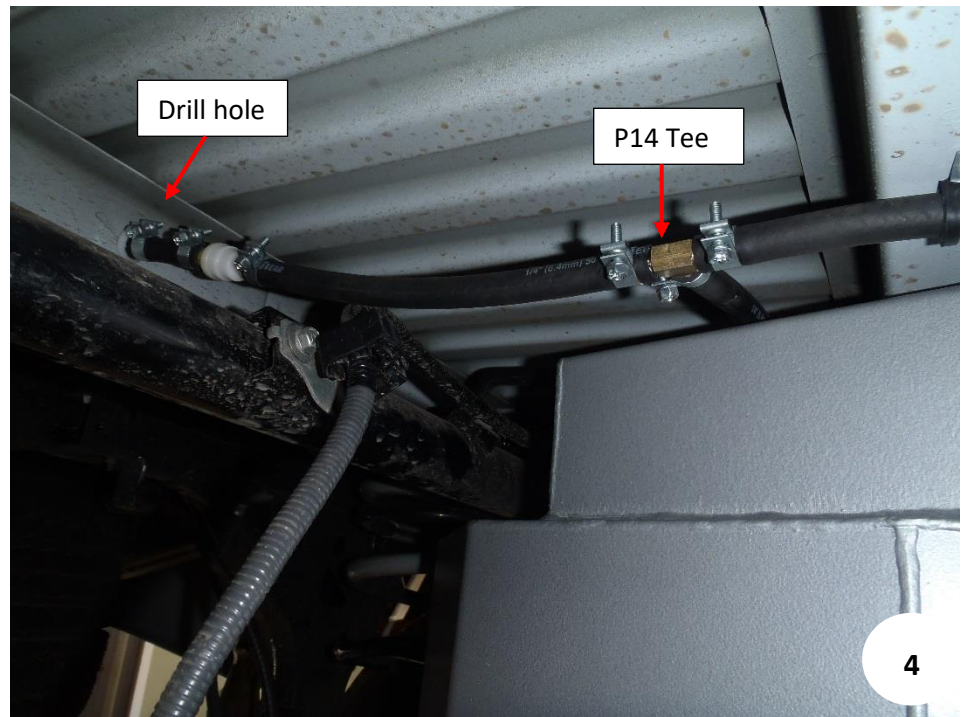
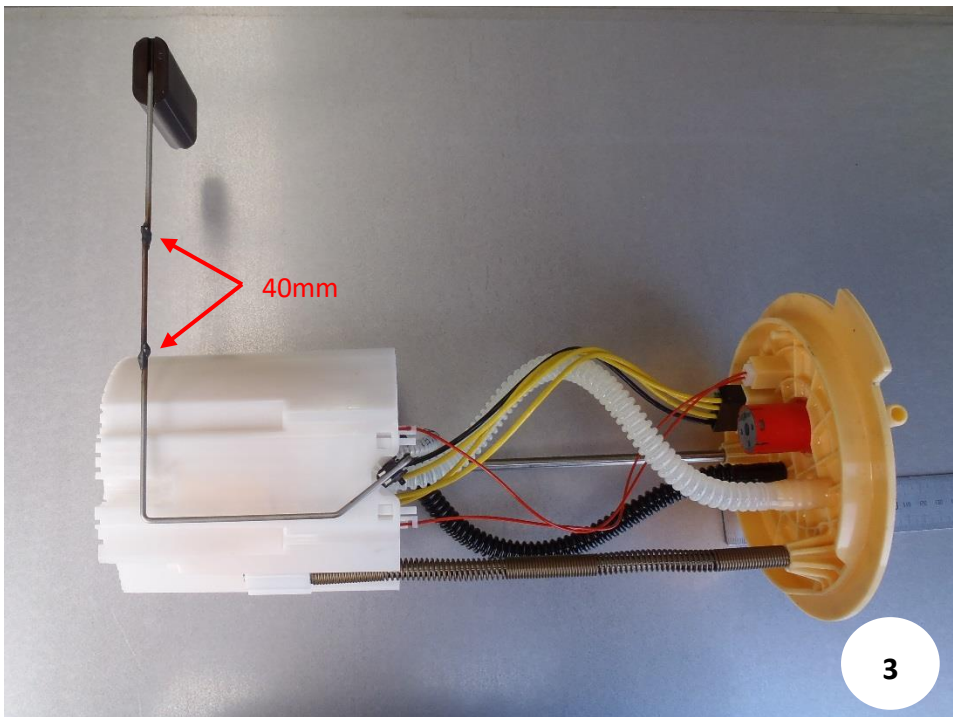
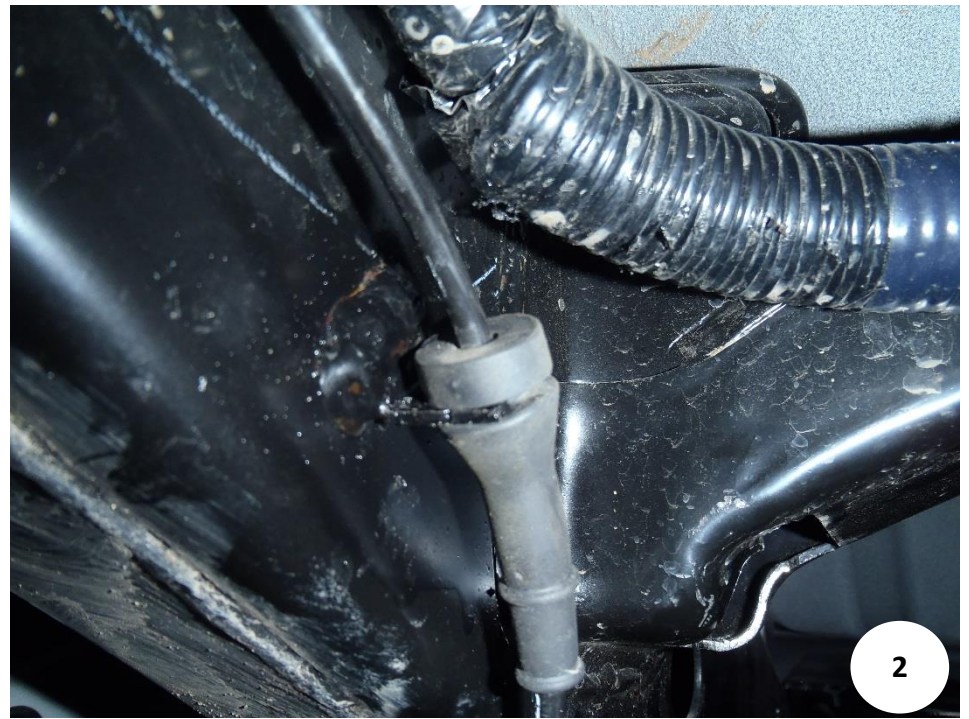


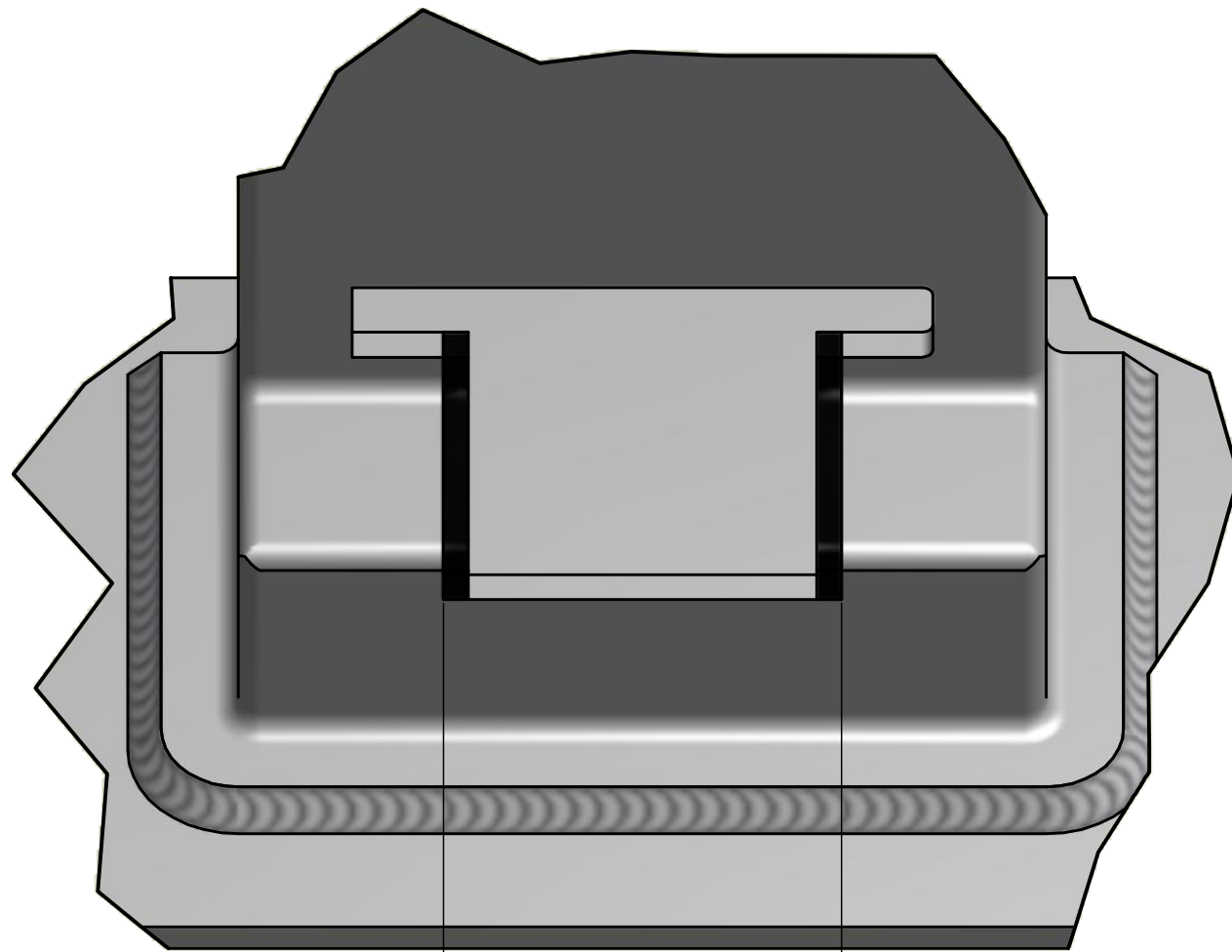
FITTING KIT CONTENTS NNDCRNP300-MY21

Brass	Sender
<ul style="list-style-type: none"> ○ 1 x P14 1/4 Tee 	<ul style="list-style-type: none"> ○ 1 x 2.5 Rod @ 60mm
Bolts / Nuts	Misc Parts
<ul style="list-style-type: none"> ○ 6 x M5 x 8 Cap Screws ○ 1 x Tek Screw ○ 6 x M5 Washers 	<ul style="list-style-type: none"> ○ 1 x Hold Down Ring ○ 1 x 3mm Rubber 65 x 300mm ○ 1 x 3mm Rubber 65 x 330mm ○ 2 x Strap Reinforcing Plates ○ 1 x Pair Tank Straps ○ 1 x Tank Strap Rubber 50mm @ 440mm ○ 1 x Tank Strap Rubber 50mm @ 800mm ○ 1 x Roll Over Valve ○ 1 x LRA-FTG-2 ○ 1 x BS 357 O Ring
Hose	Cable Ties
<ul style="list-style-type: none"> ○ 1 x 6mm Fuel Hose @ 50mm ○ 1 x 6mm Fuel Hose @ 135mm ○ 1 x 6mm Fuel Hose @ 200mm ○ 1 x 6mm Fuel Hose @ 640mm ○ 1 x 35mm Fuel Hose @ 90mm ○ 2 x Conduflex CF10 @ 300mm 	<ul style="list-style-type: none"> ○ 1 x 7" Cable Tie
Hose Clamps	5 Pages Fitting Instructions Consisting of:
<ul style="list-style-type: none"> ○ 8 x EFI Hose Clamps ○ 1 x 13mm Rubber line P Clip 	<ul style="list-style-type: none"> ○ 2 x Pages Fitting Instructions ○ 1 x Page Fitting Kit Contents ○ 1 x Page Fitting Installation Photos ○ 1 x Page Rear Tank Strap Drawing

Kit Packed By _____

Checked By _____





36mm

THIS DRAWING REMAINS THE PROPERTY OF
LONGRANGE AUTOMOTIVE AND IS NOT TO BE DUPLICATED
WITHOUT PERMISSION



NNDCRNP300

INSTALLATION

Nissan Navara NP300 2015-
135ltr replacement tank.
Tank strap cut-out modification.