



**Installation Instructions for TLC78V8SSW
Toyota Landcruiser 90L Stainless Steel
Water Tank to suit VDJ78 Series Troop Carrier
With Under Bonnet Filler**

This tank will fit with the Torqit 3.5" exhaust system.

Part number for the options are:

HS8191SS – Turbo Back System

HS8180SS – DPF Back System

This water tank fits forward of the rear axle on the LHS of the drive shaft and steps up and over the drive shaft to the RHS. This tank requires clear floor access to the inside of the vehicle to complete installation. It also requires the exhaust muffler to be changed or modified. The filler is from Under bonnet with a click on hose type fitting.

1. Complete the exhaust modifications first. The gap between the inside of the L/H Chassis rail and the side of the tank is 200mm. Disconnect the park brake cable from the rear diff assembly and take the cable forward over the crossmember until the tank is fitted. The cable will then run through the tube in the tank. Cut the rubber and Stainless cable guides from the Cable (**Refer Pic A**) leaving part of the rubber around the metal lug of the cable to stop it chaffing in the tube of the water tank (**Refer Pic B**) The rear diff center cable guide bracket needs to be prized open to remove and replaced once cable has been run through tank (**Refer Pic C**) Remove the rear drive shaft, taking note of spline alignment for later re-fitment.
2. Assemble the fittings in water tank as shown in the supplied fittings diagram (**Refer PDF Diagram**)
3. Jack the tank into position keeping it 205mm from the inside face of the L/H chassis rail and push forward to that the rear brackets are up against the rear floor brace. (**Refer Pic D**) The holes in the brackets line up with the center of the floor rib. Mark the holes and drill 10.5mm holes and fit 40 x 5mm Plates with bolts welded from the inside and secure with Washers and Nyloc nuts. (Seal around bolts where they go through the floor) (**Refer Pic E**)
4. Run the 2 x 12mm hoses along the R/H chassis rail, send one up the fire wall behind the brake booster this is the air purge line. Connect to the P6 ½ x ¼ elbow on the R/H side of the tank, the other end in the engine bay terminating with the P10 ½ bronze screen. Connect the other 12mm line to the RJ 2513 reducing joiner and connect to tank filler with 25mm hose. Terminate in engine bay on the RHS near the Air cleaner box with the click on hose and end cap. Leave enough hose to gain easy access for filling. (**Refer Pic's F1-F6**)

5. Refit the drive shaft. Refit the Park brake cable by threading cable through the 50mm tube in the center of tank and re-connect to diff assembly with cable guide re crimped to Nylon guide. **(Refer Pic G)**
6. Connect P6 1/2 x 1/4 Water Pick up elbow to the inlet of your water pump.
7. Check over all hoses and fittings.



FITTING KIT CONTENTS TLC78V8SSW with Under Bonnet Filler

Brass:	Electrical:
<ul style="list-style-type: none"> ○ 2 x P6 1/2 x 1/4 12mm Elbow ○ 1 x P10-0804 1/2" x 1/4' Female Barb ○ 1 x 2921-04 Brass Screen ○ 1 x No64 1/4" Brass Plug (Fitted to Tank) ○ 1 x No64 1/8" Brass Plug 	Pack Into Kit Only If Required: <ul style="list-style-type: none"> ○ WG0080 Water Level Indicator ○ SP0004 Water Tank Sender Probe
Bolts / Nuts:	Misc Parts:
<ul style="list-style-type: none"> ○ 4 x M10 Nyloc Nuts ○ 4 x M10 Washers ○ 1 x Tek Screw ○ 1 x M6 x 20 Bolt ○ 2 x M6 Washers ○ 1 x M6 Nut ○ 1 x M6 Spring Washer 	<ul style="list-style-type: none"> ○ 1 x RJ2513 25mm x 13mm Reducing Joiner ○ 1 x 13mm Pope Snap on Adaptor Cap ○ 4 x 40mm x 200mm x 5mm Reinforcing Plates with M10 x 30 Bolts Welded
Hose Clamps:	Cable Ties:
<ul style="list-style-type: none"> ○ 4 x 1/2" Hose Clamps ○ 2 x 1" Hose Clamps ○ 1 x 25mm P Clip 	<ul style="list-style-type: none"> ○ 12 x 7" Cable Ties
Sender:	Pumps & Filters:
Hose:	11 Pages of Fitting Instructions Consisting of:
<ul style="list-style-type: none"> ○ 1 x 25mm Water Fill Hose @ 60mm ○ 2 x 1/2" Drinking water hose @ 3000mm ○ 2 x CF16 Conduflex @ 3000mm 	<ul style="list-style-type: none"> ○ 2 x Page Fitting Instructions ○ 1 x Page Fitting Kit Contents ○ 1 x Page Fittings Diagram ○ 7 x Pages Fitting Instruction Photos

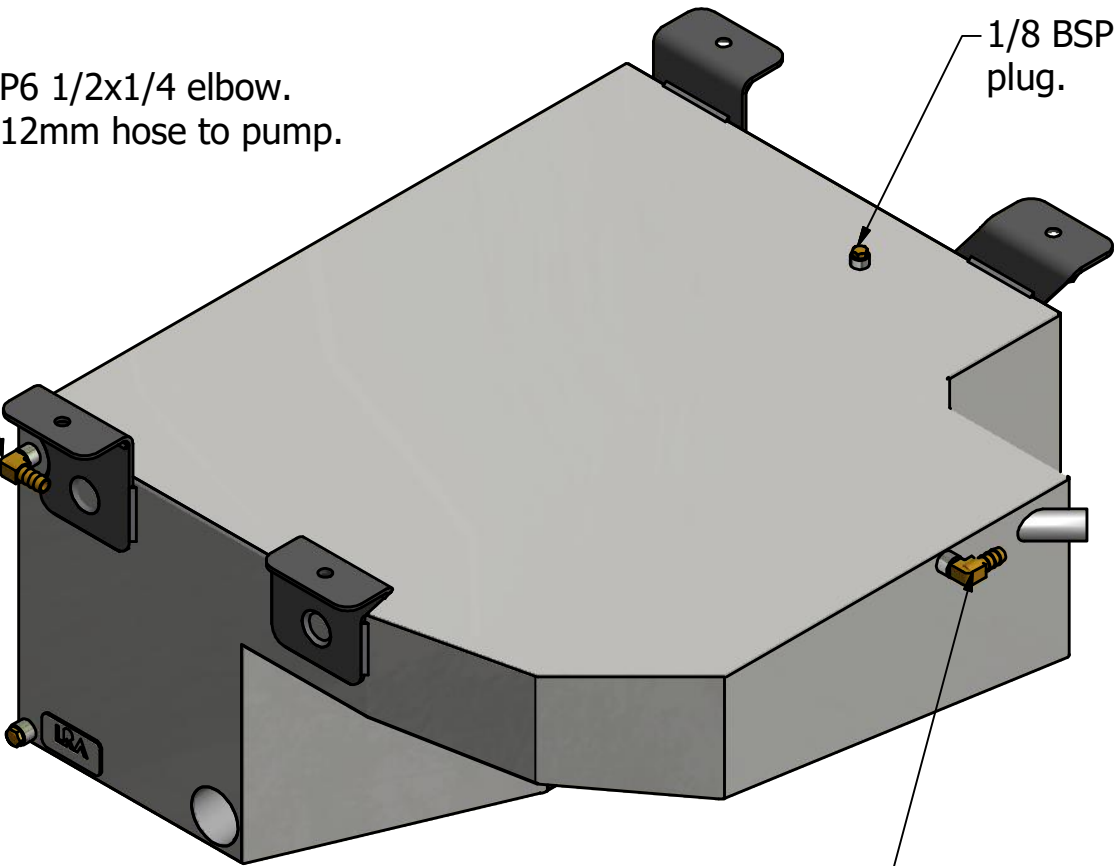
Kit Packed By _____

Checked By _____

P6 1/2x1/4 elbow.
12mm hose to pump.

1/8 BSP
plug.

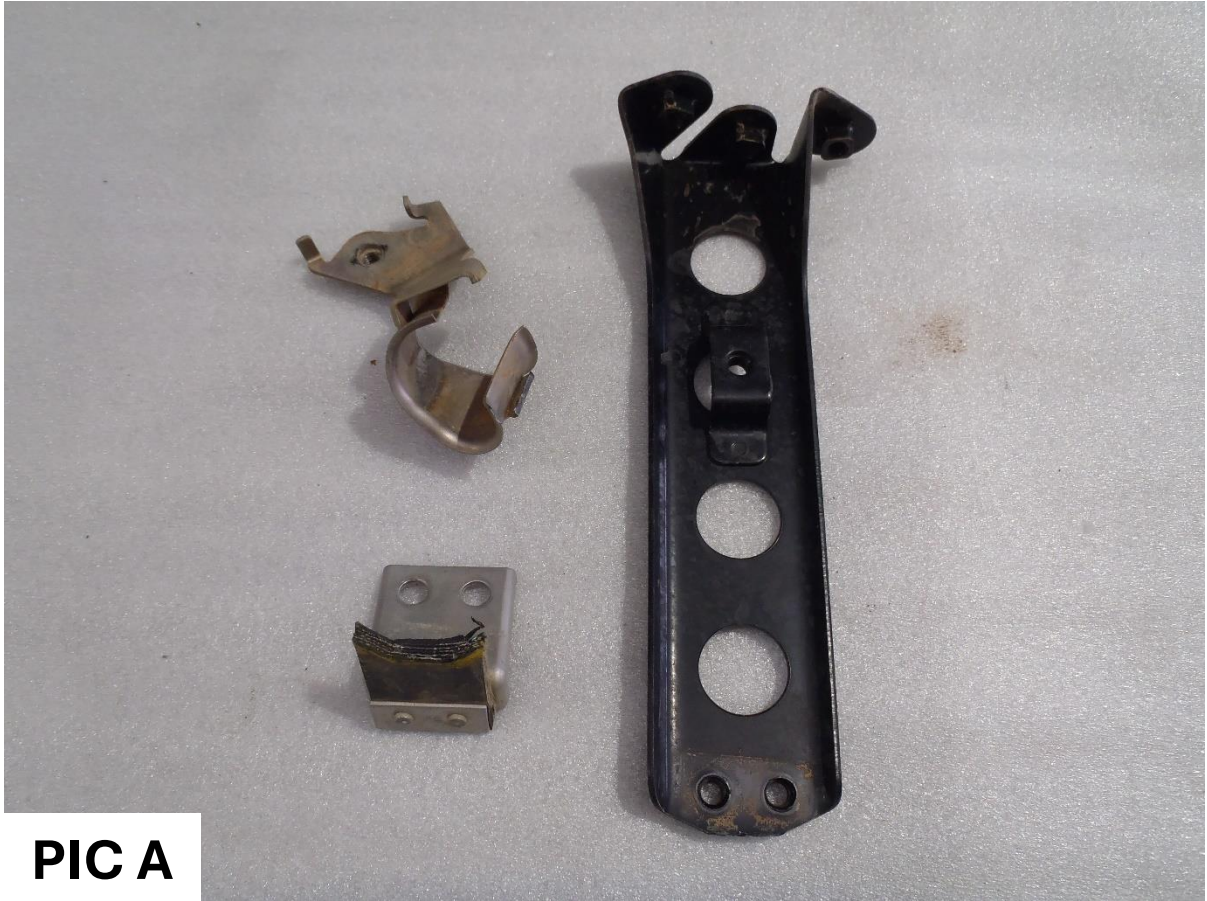
P6 3/8x1/4 elbow.
10mm filler vent line.



THIS DRAWING REMAINS THE PROPERTY OF
LONG RANGE AUTOMOTIVE AND IS NOT TO BE DUPLICATED
WITHOUT PERMISSION

	TLC78V8SSW	18/2/2022
	Toyota Landcruiser 78series 2007- V8 diesel troop carrier. 90ltr centre water tank.	

**TLC78V8SSW WITH UNDER BONNET PRESSURE FILLER
INSTRUCTION PHOTOS**

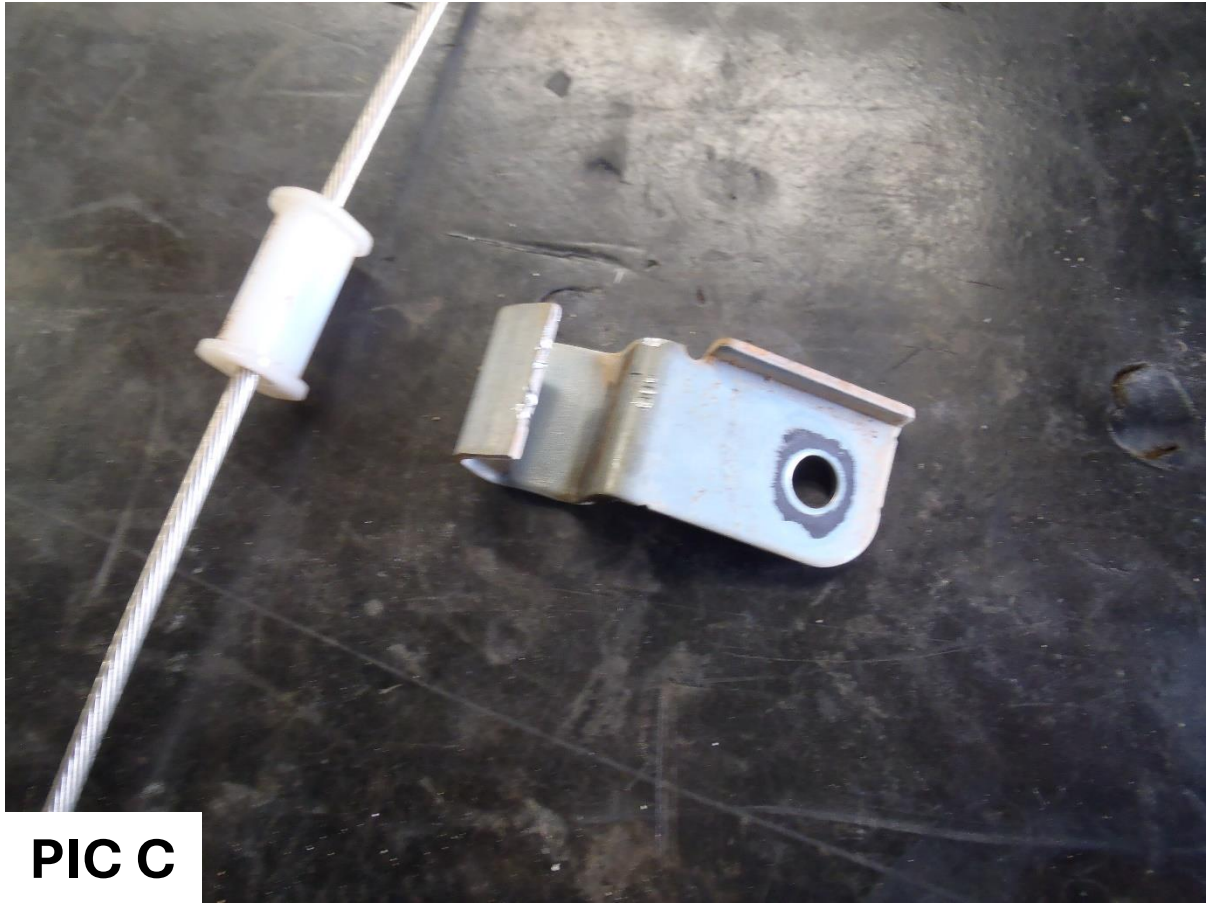


PIC A



PIC B

**TLC78V8SSW WITH UNDER BONNET PRESSURE FILLER
INSTRUCTION PHOTOS**

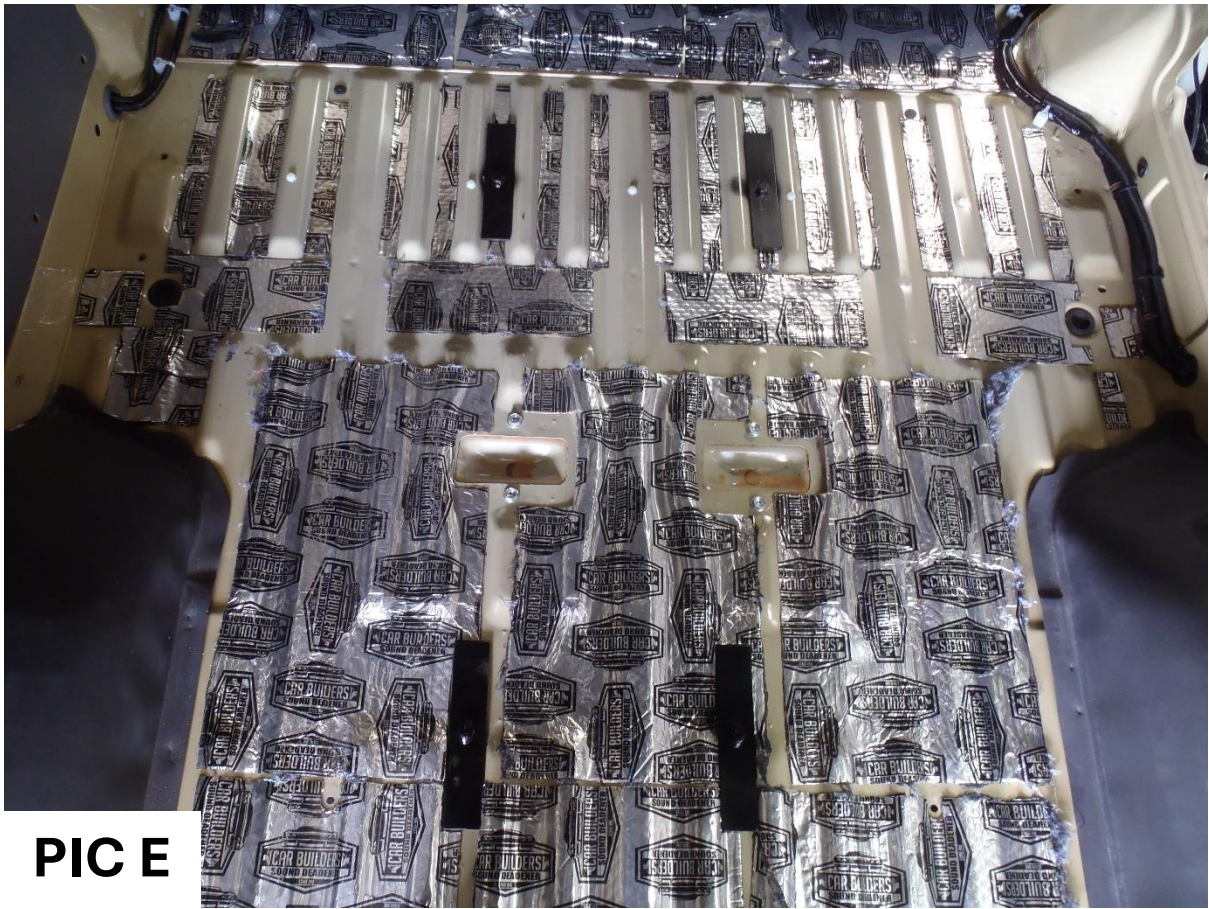


PIC C



PIC D

**TLC78V8SSW WITH UNDER BONNET PRESSURE FILLER
INSTRUCTION PHOTOS**



PIC E

**TLC78V8SSW WITH UNDER BONNET PRESSURE FILLER
INSTRUCTION PHOTOS**



PIC F1



PIC F2

**TLC78V8SSW WITH UNDER BONNET PRESSURE FILLER
INSTRUCTION PHOTOS**



PIC F3



PIC F4

**TLC78V8SSW WITH UNDER BONNET PRESSURE FILLER
INSTRUCTION PHOTOS**



PIC F5



PIC F6

**TLC78V8SSW WITH UNDER BONNET PRESSURE FILLER
INSTRUCTION PHOTOS**



PIC G