



Installation Instructions for: JGJTPA Jeep Gladiator JT 4 D/Cab Petrol 64L Auxiliary Tank

25/01/21 - TL

This auxiliary tank fits under the center of the vehicle on the LH side of the drive shaft. Filling is via a t-piece in the fill line. Both tanks will fill at the same time. Fuel is transferred via an electric pump that will pump fuel from the auxiliary tank into the OEM tank. A combination switch/gauge unit will be located in a suitable position on the dash. When the switch is in operation an **ORANGE** light will be on, indicating that the transfer pump is in operation. A series of lights will also indicate the fuel level. All **GREEN** lights showing FULL, one **RED** light showing EMPTY. When the pump is in operation and the tank is empty, the red light will flash. The pump will then run for 2 minutes and automatically shut off.

(DO NOT OPERATE TRANSFER PUMP WITH NO FUEL IN THE AUXILIARY TANK OR PUMP FAILURE WILL OCCUR).

1. Select a suitable location for the switch/gauge unit. We suggest on the RH side of the steering column in the small panel just below the headlight switch for right hand drive vehicles. This needs to be accurately fitted as there is minimal clearance for any variation (**Refer Pic 1**). Part of the under section may need to be removed. A 12V ignition source can be found in the wiring loom on the LH side of the steering column. Pink wire yellow trace (check with test light). Carry out wiring as per diagram. Run 2 core wire to RH side of kick panel and under front and rear scuff plates. Drill an 8mm hole and fit the wiring grommet, then exit wire through the grommet. Run over the top of the OE tank for later connection of fuel pump and sender unit.
2. Remove the transfer case bash plate. Disconnect the exhaust system at the slip joint next to the transfer case. Unbolt the rear exhaust mounts and remove the exhaust from the vehicle. Cut the exhaust pipe 50mm from the rear of the **front** resonator and 60mm from the rear of the muffler (**Refer Pic 2**). **IMPORTANT NOTE:** Before refitting the exhaust, fit the new front tank mount using M8 x 20 bolts, nuts and washers. Use the transfer case bash plate bolt for location of bracket (**Refer Pic 3**). Fit the new exhaust mount to the LH chassis rail with the rubber mount installed (**Refer Pic 4**). Re fit the front resonator and fit the new muffler assembly, making

sure the resonator as close to the LH chassis rail as possible at the front. Refit the rear tail pipe section and bolt in place. Check for alignment and clamp all slip joints and use sealer on all joins. (If possible, we recommend to weld new muffler section in place). Bolt the exhaust pipe heat shield to the pipe **(Refer Pic 5)**.

3. Disconnect the filler hose from the main tank. Unclip the 8mm plastic line and the charcoal canister vent line from the pipe (cap off fuel tank filler). Once disconnected, cut the fill pipe 50mm from the mounting bracket **(Refer Pic 6)**. Unbolt and remove from the vehicle. Fit P6 5/16 x 1/8 elbow into the main tank. Leg of tee filler pointing up. Make sure the ICV is fitted to the auxiliary tank leg **(Refer Pic 7)**. Cut 115mm from the small end of the OE rubber fill hose. Use this and a new 75mm length of 35Ø hose at OE tank. Refit the tee filler. Bolt in place and re-clip plastic lines.
4. Disconnect the FLVV line from the OE tank to the charcoal canister. You will need to cut the line to remove. Remove the quick connect fitting and fit to the new rubber hoses and plastic tee **(Refer Pic 8)**. Reinstall running hose outside of the OE tank shield mount cover with 450mm Conduflex.
5. Drill a 10.5mm hole in both inboard rear and middle cross-members, there is only a hole in the bottom face **(Refer Pic 9)**.
6. Mount the fuel pump to bracket provided. Screw the 5/16 x 1/8 elbow to the outlet side of the pump and filter to the inlet. Mount the pump to stud which holds the RH side of hand brake locater. Connect the outlet of the pump to the main tank. Fill pipe transfer pump point **(Refer Pic 10)**. Connect the earth wire and power wire (yellow).
7. Fit the 500mm of the 16mm hose to the auxiliary tank FLVV, also screw in 5/16 x 1/4 elbow into the remaining socket and point to the rear of the vehicle **(Refer Pic 11)**, connect the 500mm of 5/16 hose to the elbow. Fit the 160mm of 35Ø hose to the auxiliary tank filler neck. Jack the tank into position, guide the fill hose onto the filler and secure tank with 2 x M10 x 30 bolts, nuts and washers for the front, M10 x 75 bolt, nut and washer for the middle mount and M10 x 30 x and M10 x 100 bolt, support plate and nut using heavy duty washer and spring washer on the underside of the rear inboard mount.
8. Connect the auxiliary hose to the remaining barb on the tee piece and connect 5/16 pick-up line to the inlet side of the pump. Connect the white wire to the sender unit and connect the sender unit to earth. Check all of the hose connections and check for resonator clearance at the front of the tank. Refit the transfer case bash plate. Fill with fuel and check operation of pump and gauge.



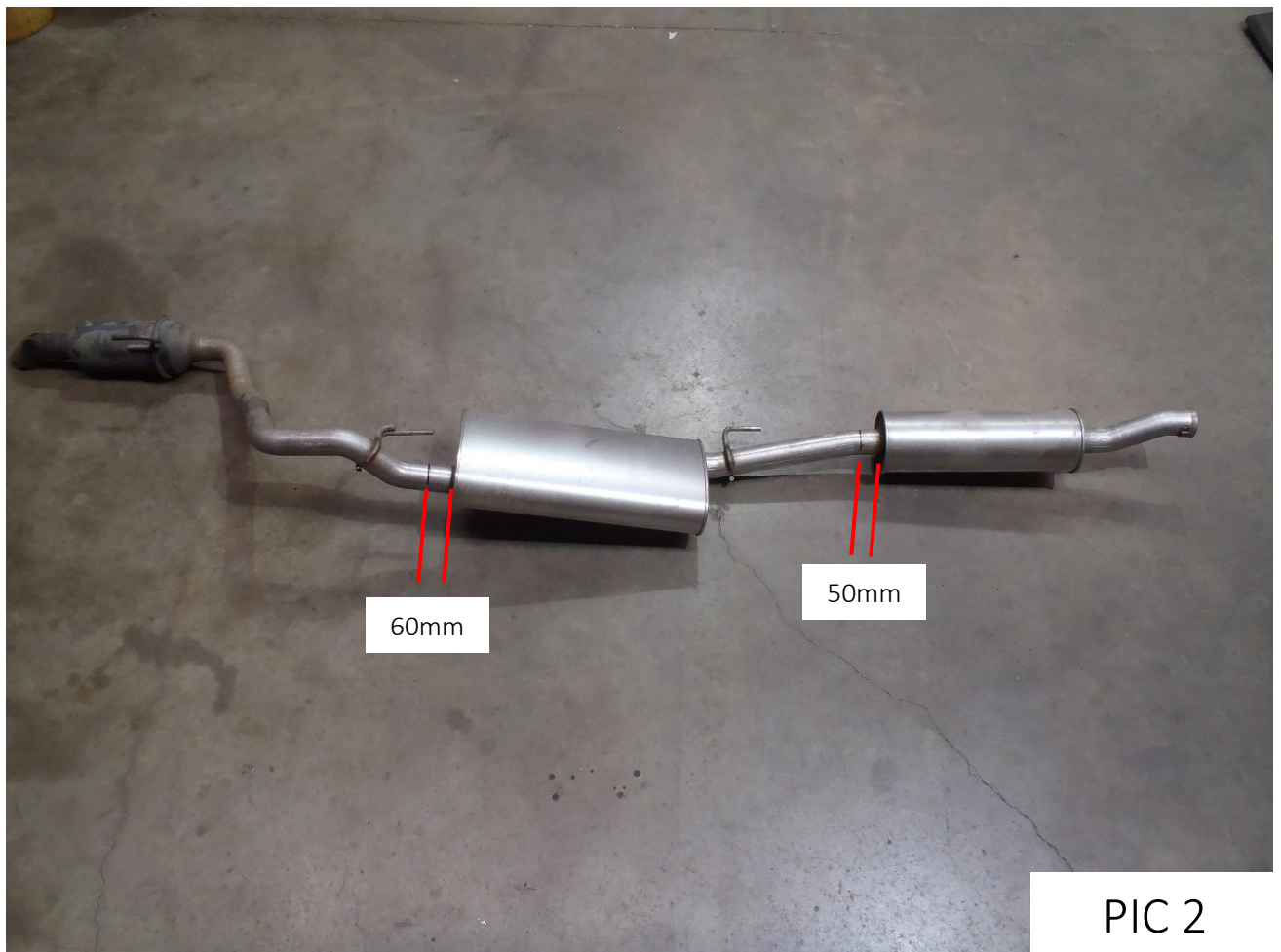
FITTING KIT CONTENTS – JGJTPA

Updated 9/23 - TL	
Brass:	Electrical:
<ul style="list-style-type: none"> ○ 2 x P6 5/16 x 1/8 Elbows ○ 1 x P6 5/16 x 1/4 Elbow ○ 1 x TS16 Norma Tee 	<ul style="list-style-type: none"> ○ 1 x LRA-PG210 Switch/Gauge ○ 1 x 3mm Two Core @ 4000 mm ○ 1 x 4mm Single Core Blue Wire @ 300mm ○ 1 x 5 AMP Fuse ○ 1 x Fuse Holder ○ 2 x Fuse Holder Terminals ○ 1 x Red Insulated Terminal ○ 2 x 5mm Red Eye Terminal ○ 1 x 8mm Blue Eye Terminal ○ 3 x 3mm Shrink Tube
Bolts / Nuts:	Misc Parts:
<ul style="list-style-type: none"> ○ 4 x M8 x 20 Bolts ○ 3 x M10 x 30 Bolts ○ 1 x M10 x 75 Bolt ○ 1 x M10 x 100 Bolt ○ 20 x M8 x 20 Washers ○ 9 x M10 x 25 Washers ○ 12 x M8 Nyloc Nuts ○ 5 x M10 Nyloc Nuts ○ 2 x Tek Screws ○ 6 x M5 x 12 Pan Heads ○ 6 x M5 Spring Washers ○ 1 x 10mm Spring Washer ○ 1 x M10 x 27mm 3mm H/D Washer 	<ul style="list-style-type: none"> ○ 1 x TFJGJTPA with 35mmØ ICV ○ 1 x Front Secondary Bracket (2 Pieces) ○ 1 x Tank Heat Shield ○ 1 x RHR Top Mount Plate ○ 1 x FLV 80-16 Valve ○ 1 x BS337 O-Ring ○ 1 x WG2 Wiring Grommet
Hose Clamps:	Hose:
<ul style="list-style-type: none"> ○ 4 x 1/4 Hose Clamps ○ 6 x 5/8 Hose Clamps ○ 2 x 1 Hose Clamps ○ 4 x 1 1/4 Hose Clamps 	<ul style="list-style-type: none"> ○ 1 x 8mm Fuel Hose @ 500mm ○ 1 x 8mm Fuel Hose @ 200mm ○ 1 x 16mm Fuel Hose @ 130mm ○ 1 x 16mm Fuel Hose @ 500mm ○ 1 x 16mm Fuel Hose @ 545mm ○ 1 x 35mm Hose @ 75mm ○ 1 x 35mm Hose @ 160mm

	<ul style="list-style-type: none"> ○ CF20 Conduflex @ 450mm
Pumps & Filters:	Cable Ties:
<ul style="list-style-type: none"> ○ 1 x Fuel Pump & Filter ○ 1 x Fuel Pump Mounting Plate 	<ul style="list-style-type: none"> ○ 5 x 7" Cable Ties ○ 3 x 11" Cable Tie
Sender:	11 Pages of Fitting Instructions Consisting of:
<ul style="list-style-type: none"> ○ 1 x 0-90 OHMS Sender C/W 400mm Earth, Installed Using: <ul style="list-style-type: none"> - 5 x M5 x 10 Pan Heads - 5 x M5 Spring Washers 	<ul style="list-style-type: none"> ○ 2 x Pages Fitting Instructions ○ 2 x Pages Fitting Kit Contents ○ 6 x Pages Reference Pictures ○ 1 x Page WDSGPG210 Wiring Diagram

Kit Packed By_____

Checked By _____





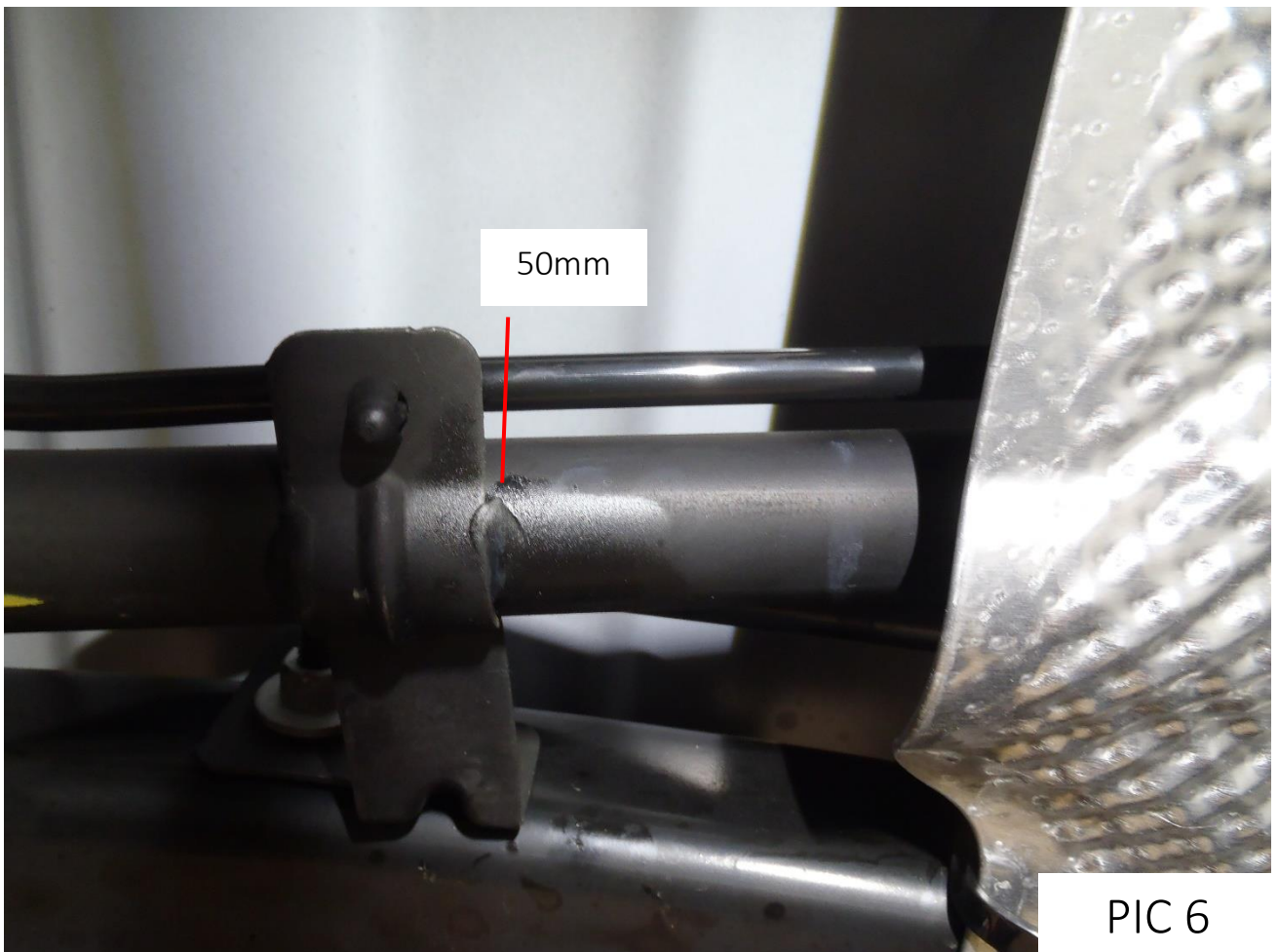
PIC 3



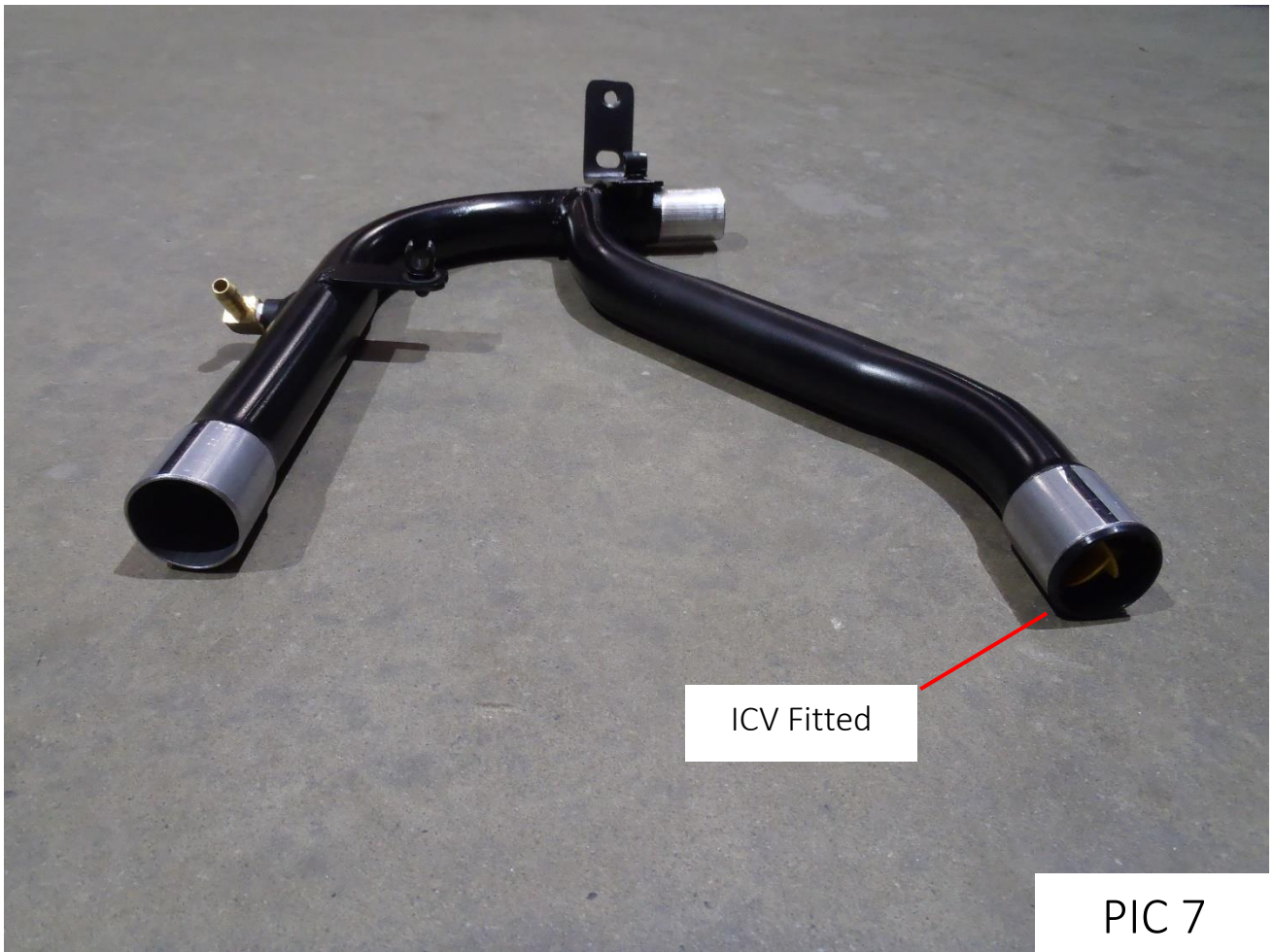
PIC 4

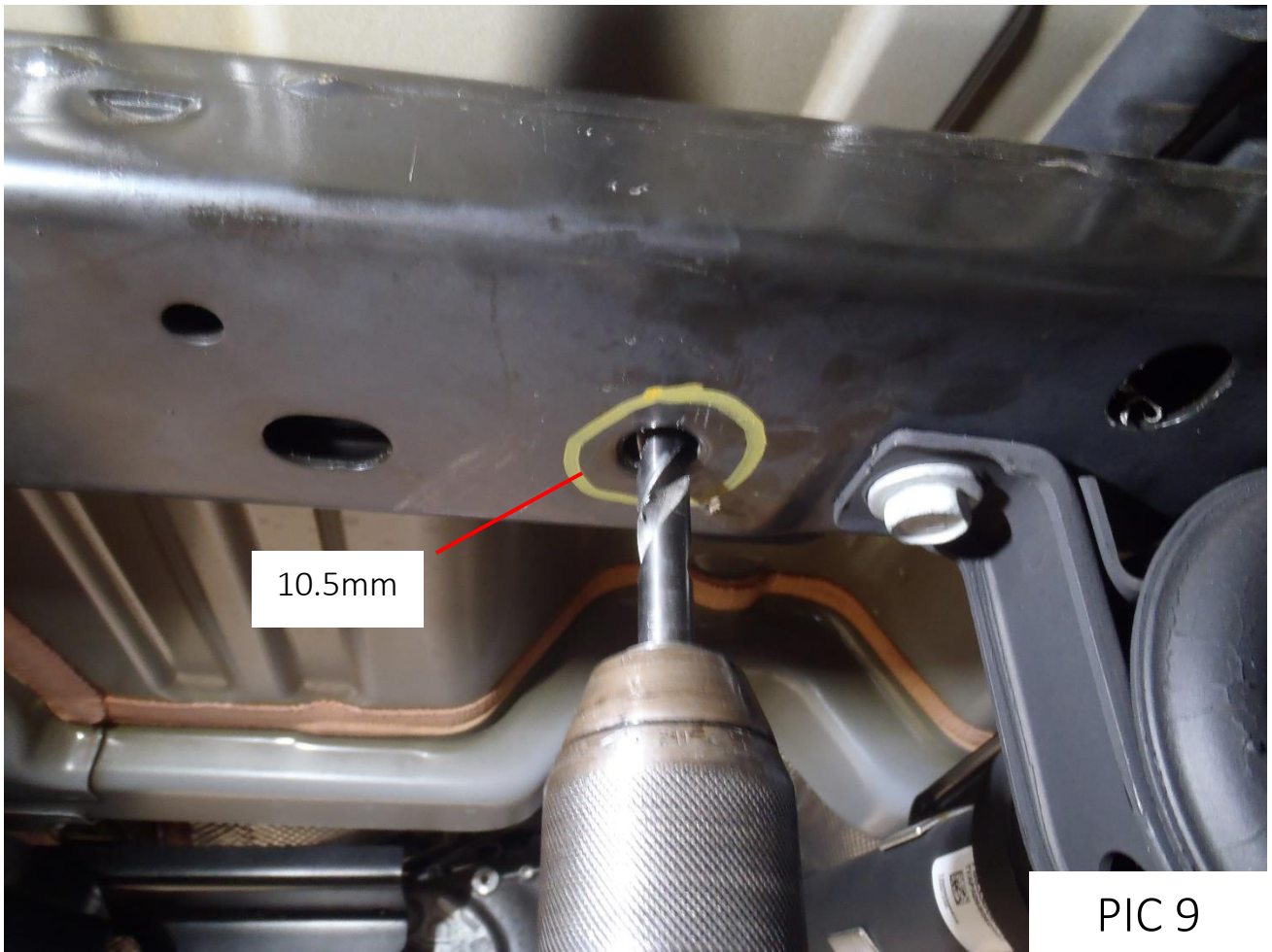


PIC 5



PIC 6

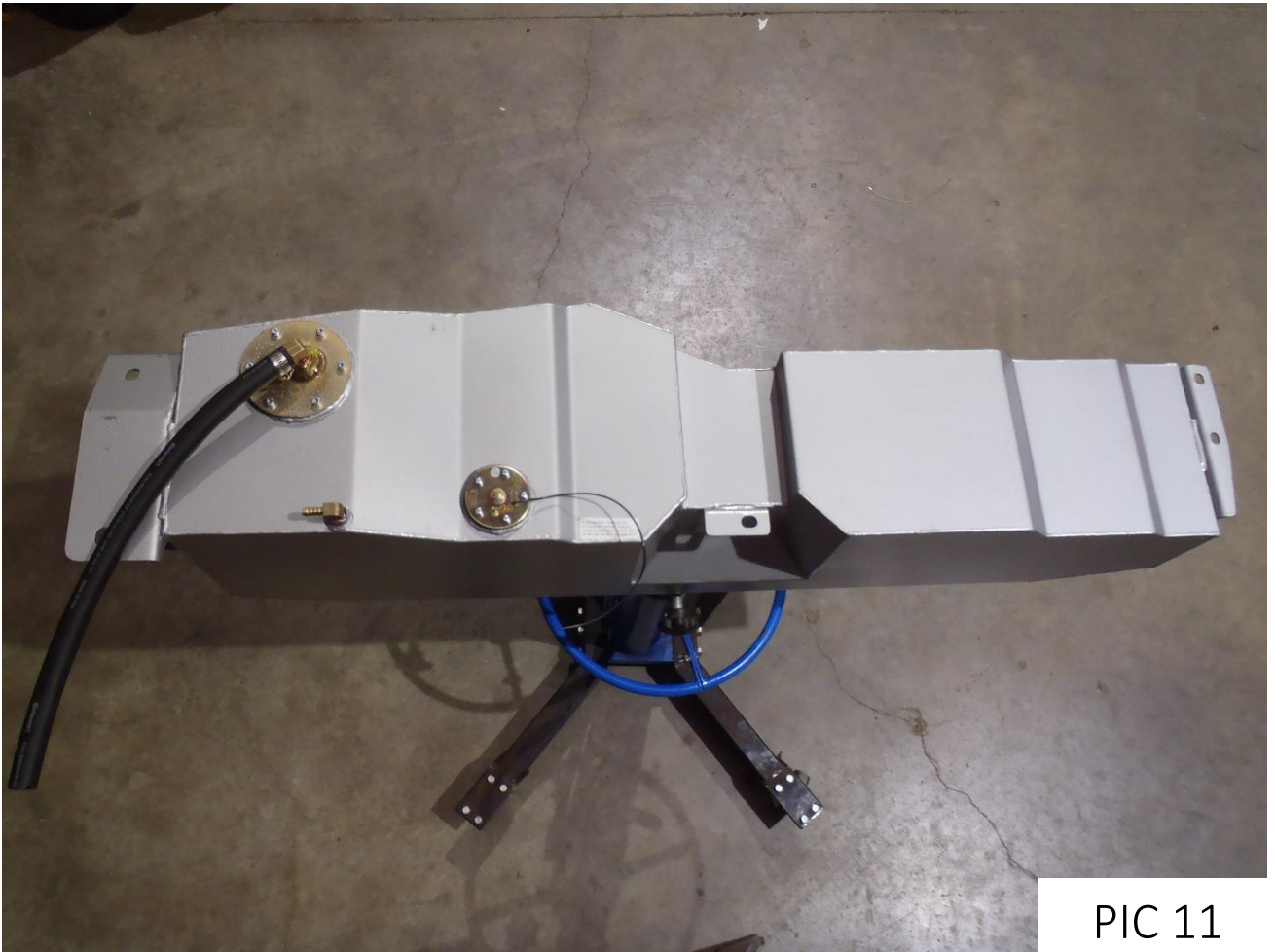




PIC 9



PIC 10



PIC 11

65ID @ 50mm Long
10° Down

BM0610 Muffler

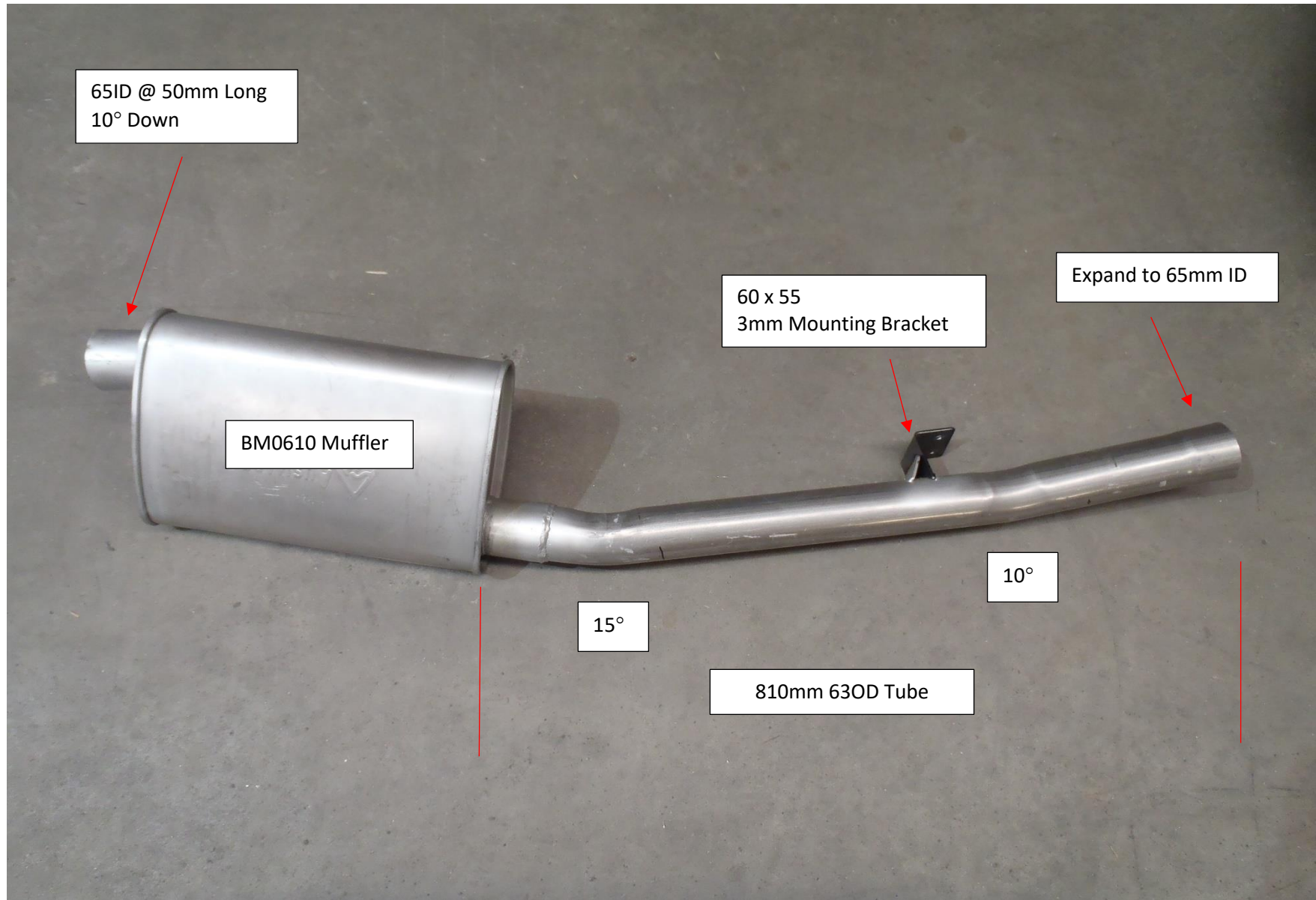
60 x 55
3mm Mounting Bracket

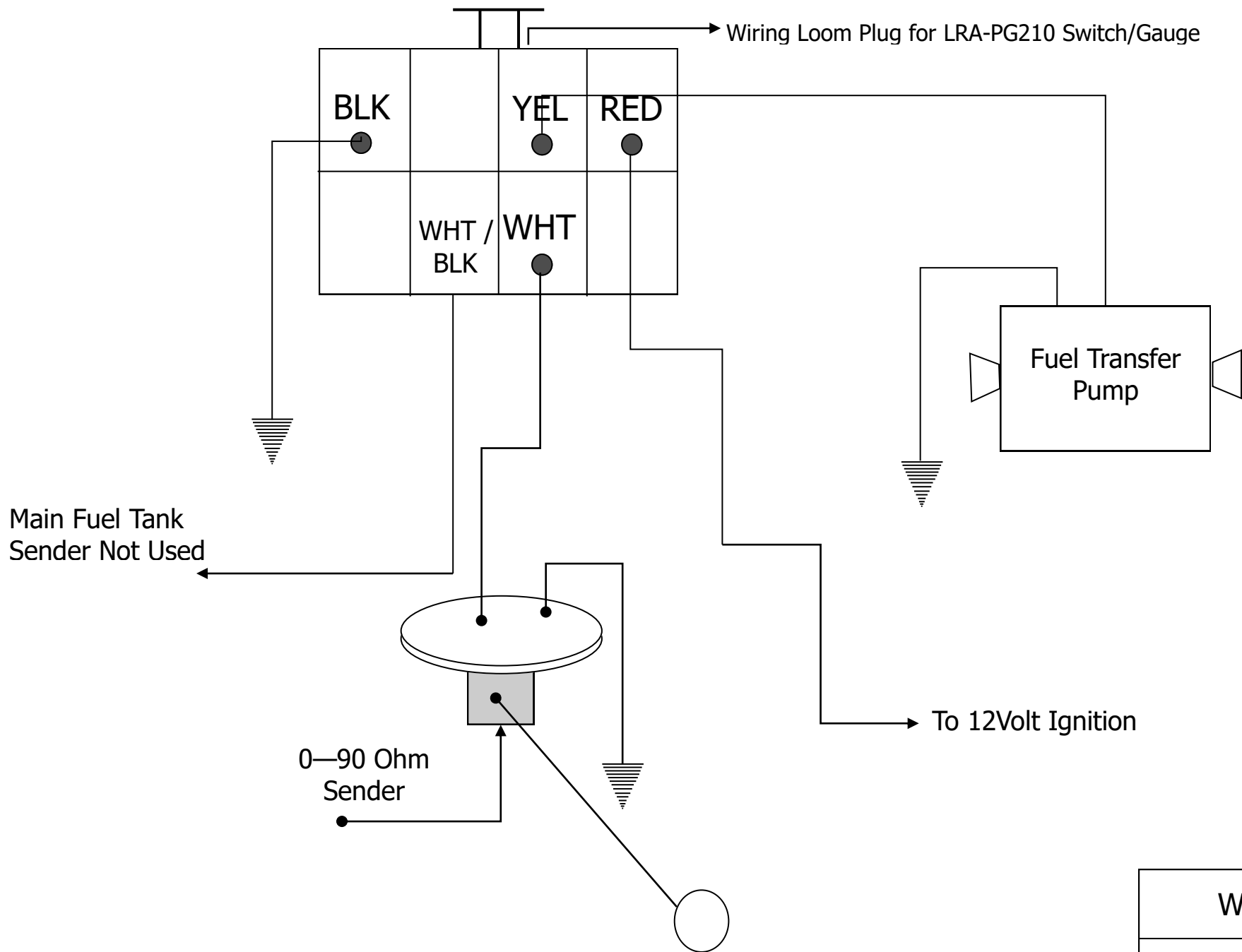
Expand to 65mm ID

10°

15°

810mm 63OD Tube





WDSGPG210