



Installation Instructions for INEGRA-P Ineos Grenadier Petrol Wagon 90L Auxiliary Tank

You can refer to the last page of the instructions for a YouTube video link, for the installation video guide of this tank

This auxiliary fuel tank fits up under the rear of the vehicle, it has a capacity of 90Lt. The standard filler is replaced with a new twin filler neck. Fuel is transferred via an electric pump that will pump fuel from the auxiliary tank into the OEM tank. A combination switch/gauge will be located into a suitable position in the dash. When the switch is in operation an **ORANGE** light will be ON, indicating the transfer pump is in operation. A series of lights will also indicate fuel level. All **GREEN** lights on showing FULL, one **RED** flashing light showing EMPTY.

1. Remove the RHR wheel, wheel arch flare and wheel arch cover. Mount the switch gauge unit in a suitable location. (We suggest in the R/H corner of the dash facia 20mm down and 25mm across **(Refer Pic A)**). A Factory fused 12-volt ignition source can be found in the R/H kick panel, it is taped back into the loom. Purple with a white trace and a black earth. These are controlled by one of the overhead aux power switches **(Refer Pic B)**. Complete wiring as per the WDSGPG210 wiring diagram and run the twin core cable to the rear of the vehicle under the scuff plates and exit out through the grommet in the R/H rear wheel arch **(Ref Pic C)**. For later connection to the pump and sender unit.
2. Remove the OE Muffler Shield and the rear section of the Heat Shield.
3. Fit the transfer pump to the mounting bracket and mount to crossmember with M8 x 20 bolt on strap. Drill an 8.5mm hole 40mm to the right of the OE hole.
(Refer Pic D + E)
4. Cut the OE exhaust pipe where it exits the Cat 50mm back from the weld. Disconnect the mounts and remove the OE muffler and tail pipe assembly **(Refer Pic F1 F2)**. Fit the replacement exhaust pipe sections and mount the rear tail pipe with the R/H Rear OE muffler mount and M10 x 30mm bolt. Complete welding of exhaust pipe slip joint.
5. Replace the 4 x OE shield hanger bolts with M10 x 40mm Set Screw bolts. Fit the new L/H secondary bracket onto the hanger bracket studs with M10 spring and flat washers and tighten. Repeat on the RHS but do not tighten for now **(Refer Pic G + H)**

6. Cut the two 16mm OE plastic lines near the top of the OE filler and remove neck from the vehicle. Cut the OE fill pipe 50mm from the bend (**Refer Pic I**). Clean up burrs and refit fill pipe to vehicle.
7. Assemble fittings into TFINEGRA-P twin filler (**Refer 'Fittings' Drawing**).
8. Fit the twin filler into position connecting to the OE fill pipe with 100mm of 32mm hose and clamps.
9. Use 950mm length of 8mm fuel hose to connect the outlet of transfer pump to pump in port on the main tank branch of the twin filler.
10. Complete the wiring of the pump and run the sender wire to the LHR corner for later connection.
11. Trim the exhaust shield as per supplied heat shield cutting guide drawing. Refit the shield to the vehicle.
12. Assemble fittings into the tank (**Refer 'Fittings' Drawing**).
13. Fit the 1300mm 6mm fuel hose to the rollover valve and the 1000mm 16mm hose to the FLVV both pointing towards the RHS.
14. Begin to jack the tank into position, feeding the 6mm and 16mm hoses up over the chassis rail, once you have the tank brackets past the hanger brackets, connect the sender unit wire and earth, tighten the bolts on the RHS hanger and secondary bracket. Fix the tank with M8 x 30 bolts spring and flat washers + M10 x 30mm bolts washers and Nyloc nuts.
15. Connect the 1000mm length of 16mm hose to the TS16 Tee in vent line. Connect the 1300mm 6mm vent line from the roll over valve to the P6 1/4 x 1/8 elbow on the twin filler. Connect the 780mm length of 8mm fuel hose to the fuel pick up on the auxiliary tank and up to the inlet side of the pump. Cover with Conduflex (**Refer Pic J & K**).
16. Assemble the auxiliary tank fill pipe with pipes 1+2 and the two 90mm lengths of 32mm hose and one length of 35mm hose, put it all together, check alignment and then tighten all clamps.
17. Neatly cable tie all hoses and wiring.
18. Ensure all clamps hoses etc are streamlined to allow the plastic wheel arch cover to fit neatly. Fit cover and wheel arch flare.



FITTING KIT CONTENTS INEGRA-P

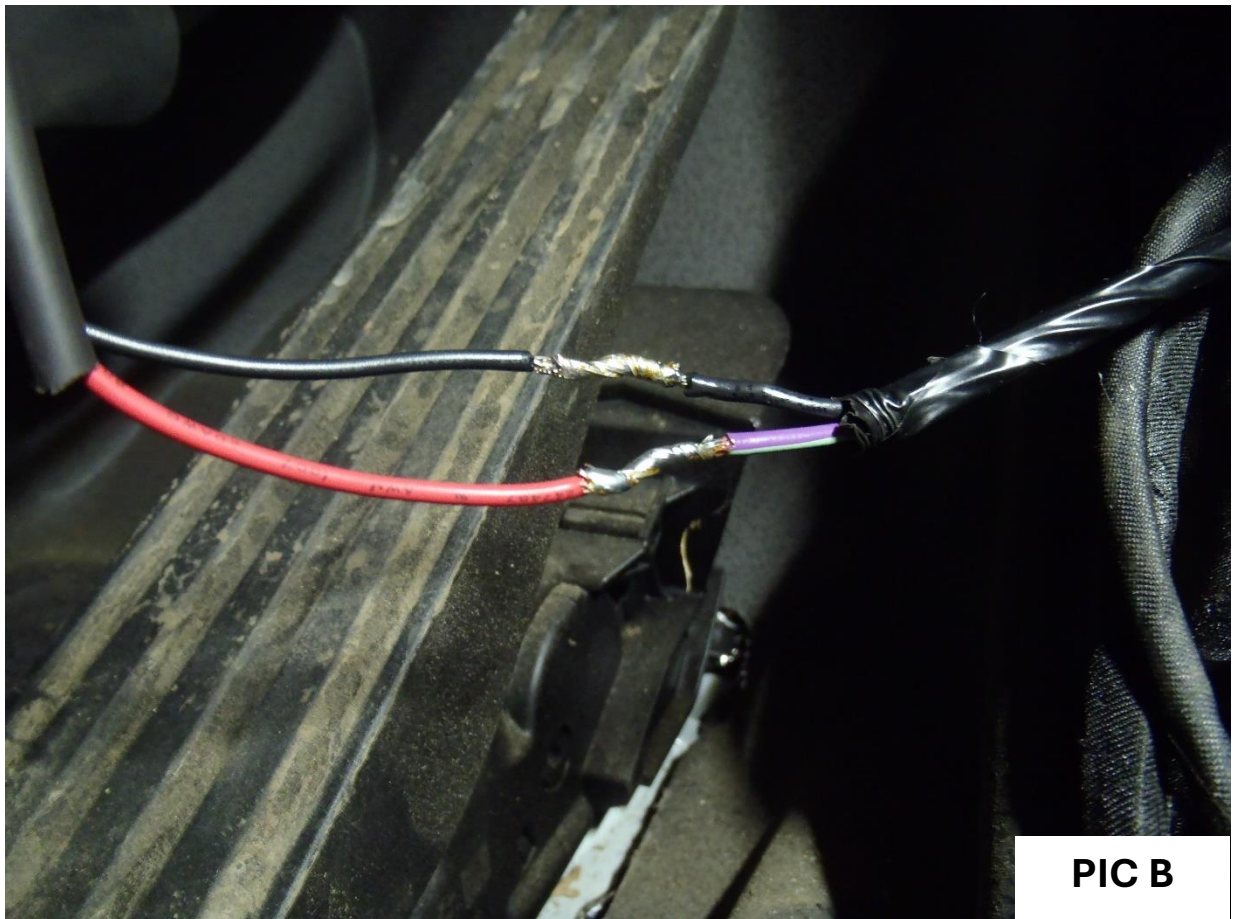
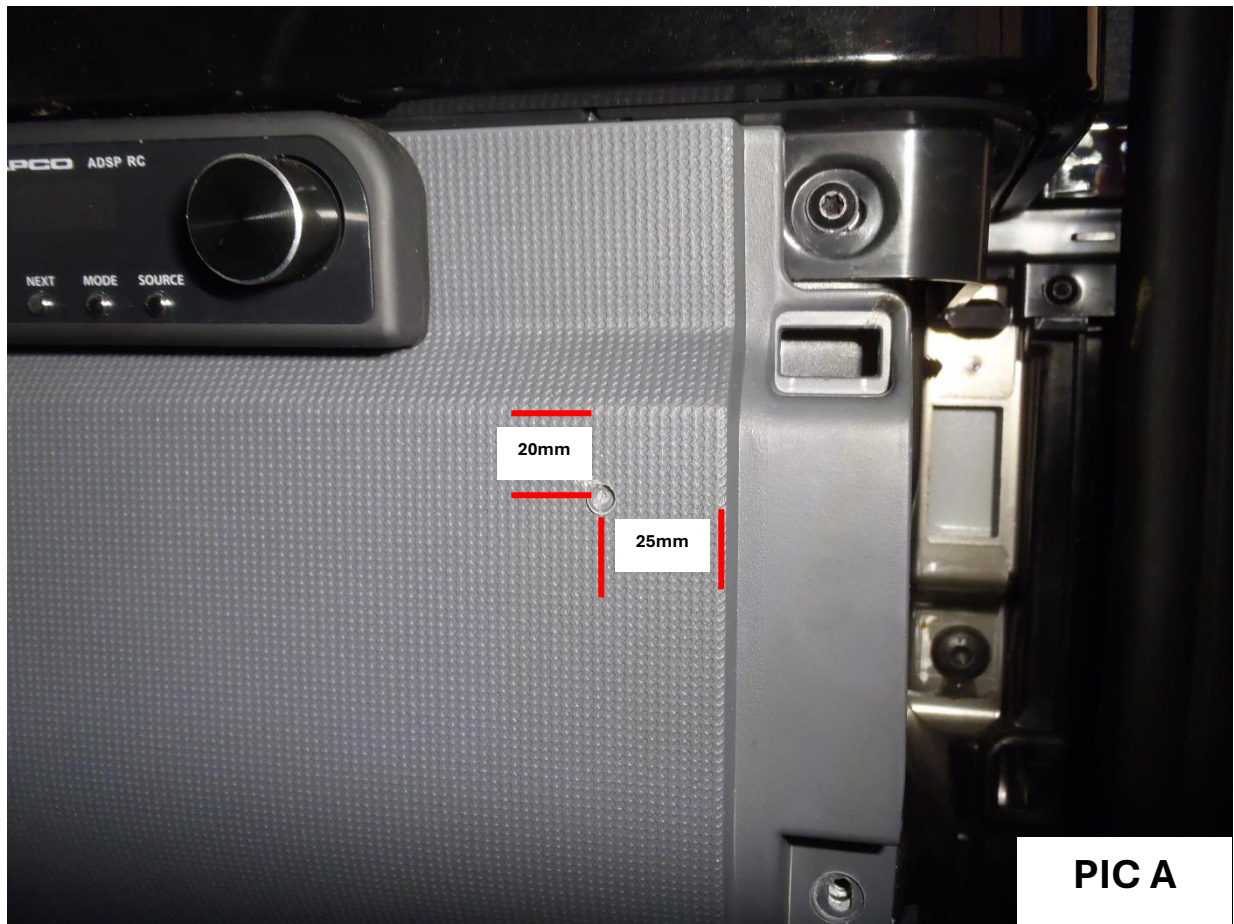
Brass:	Electrical:
<ul style="list-style-type: none"> ○ 1 x P6 1/4 x 1/8 Elbow ○ 1 x P6 5/16 x 1/8 Elbow ○ 1 x P3 5/16 x 1/4 Straight ○ 1 x P7 5/8 x 1/2 Reducing Joiner ○ 1 x O25C-02 1/8 M x F Elbow ○ 1 x TS16 Tee (Norma) 	<ul style="list-style-type: none"> ○ 1 x LRA PG-210 Switch Gauge ○ 1 x 3mm Two Core Wire @ 5000mm ○ 1 x Red Eye Terminals ○ 5 x 3mm Heat Shrink Tube @ 30mm ○ 1 x Red Insulated Terminal
Bolts / Nuts:	Misc Parts:
<ul style="list-style-type: none"> ○ 2 x M8 x 30mm Bolts ○ 3 x M10 x 30mm Bolts ○ 4 x M10 x 40mm Set Screws ○ 1 x M8 Nyloc Nut ○ 3 x M10 Nyloc Nuts ○ 4 x M10 Nuts ○ 2 x M8 x Spring Washers ○ 4 x M10 Spring Washers ○ 1 x M8 x 20mm Washer ○ 2 x M8 x 25 Flat Washers ○ 14 M10 x 25mm Washers ○ 5 x M5 x 10 Pan Head Screws ○ 5 x M5 Spring Washers ○ 6 x M5 x 10 Cap Screws ○ 6 x M5 Washers ○ 1 x M8 x 20mm Bolt on 150mm Strap ○ 1 x TEK Screw 	<ul style="list-style-type: none"> ○ 1 x FPINEGRA-PFP-2 Fill Pipe With ICV ○ 1 x FBINEGRA-P Fill Bend ○ 1 x TFINEGRA-P Twin Filler ○ 1 x L/H Secondary Bracket ○ 1 x R/H Secondary Bracket ○ 1 x EP-INEGRA-P-1 Exhaust Piece ○ 1 x EP-INEGRA-P-2 Exhaust Piece ○ 1 x 4 Bolt Exhaust Flange Gasket ○ 4 x M10 x 35mm 1.25P Flanged Bolt ○ 4 x M10 1.25P Flanged Nut ○ 1 x TFNL227 Petrol Cap ○ 1 x FV11 Roll Over Valve ○ 1 x LRA-FTG-2 ○ 1 x XHNOTION ICV (Fitted to PFP-2) ○ 1 x FLVV 80-16 ○ 1 x BS 337 O/Ring ○ 1 x Heat Shield Profile Glued to Tank

Hose Clamps:	Cable Ties:
<ul style="list-style-type: none"> ○ 4 x 1/4" Hose Clamps ○ 2 x 1/2" Hose Clamp ○ 4 x 5/8" Hose Clamps ○ 8 x 1 1/4" Hose Clamps ○ 2 x 1/4 Pinch Clamps 	<ul style="list-style-type: none"> ○ 5 x 11" Cable Ties ○ 10 x 7" Cable Ties
Sender:	Pumps & Filters:
<ul style="list-style-type: none"> ○ 1 x 0-90 OHMS Sender Unit with 500mm Earth Wire 	<ul style="list-style-type: none"> ○ 1 x Fuel Transfer Pump ○ 1 x Fuel Pump Mounting Bracket
Hose:	14 Pages of Fitting Instructions Consisting of:
<ul style="list-style-type: none"> ○ 1 x 6mm Fuel Hose @ 1300mm ○ 1 x 8mm Fuel Hose @ 950mm ○ 1 x 8mm Fuel Hose @ 780mm ○ 1 x 32mm Hose @ 100mm ○ 2 x 32mm Hose @ 90mm ○ 1 x 35mm Hose @ 90mm ○ 1 x 16mm Fuel Hose @ 270mm ○ 1 x 16mm Fuel Hose @ 1000mm ○ 1 x 16mm Conduflex @ 680mm 	<ul style="list-style-type: none"> ○ 2 x Pages Fitting Instructions ○ 2 x Pages Fitting Kit Contents ○ 6 x Pages Reference Pictures A - K ○ 1 x Page WDSGPG210 Wiring Diagram ○ 1 x Page 'Fittings' Drawing ○ 1 x Page Heat Shield Cutting Guide ○ 1 x Page Installation Video Link

Kit Packed By _____

Checked By _____

INEGRA-P PHOTO INSTRUCTIONS



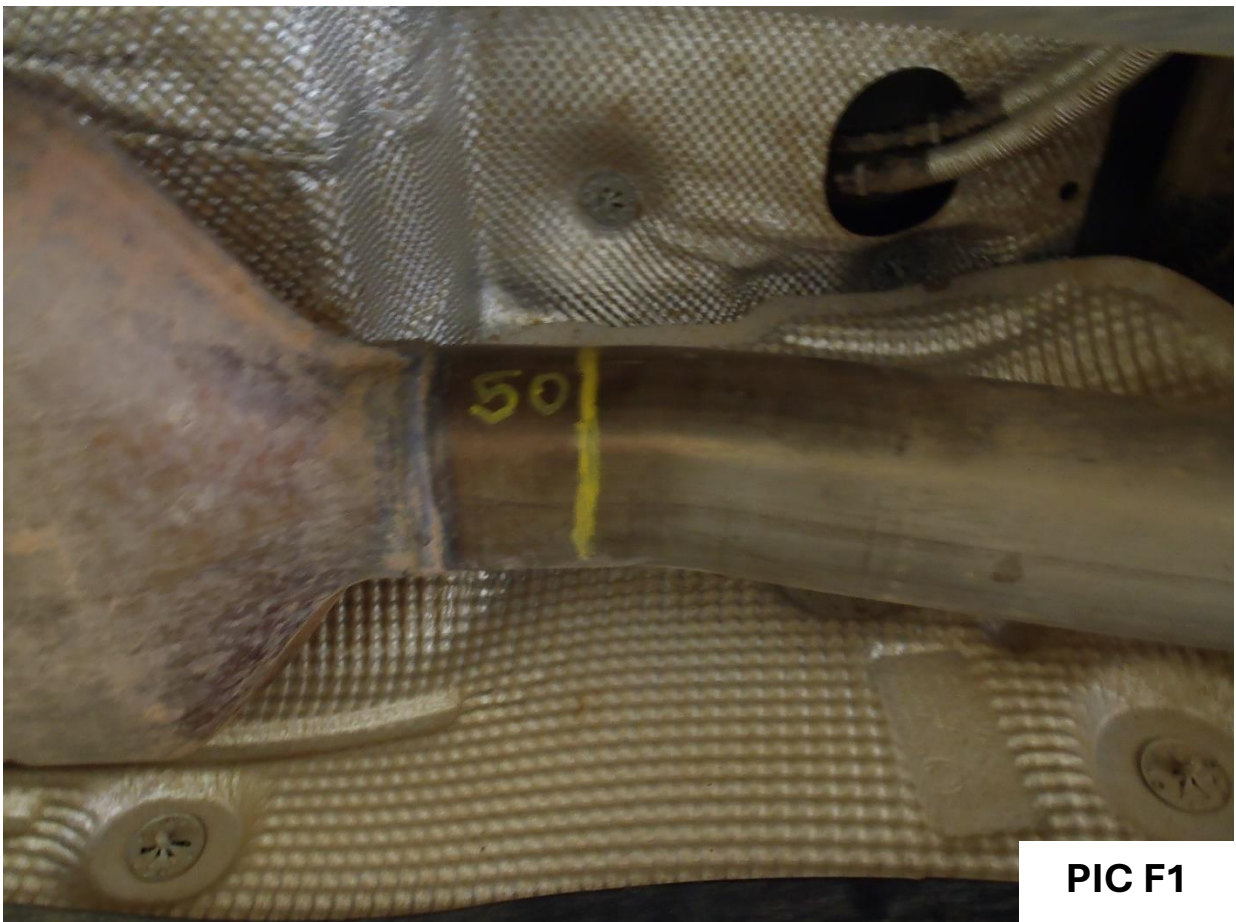
INEGRA-P PHOTO INSTRUCTIONS



INEGRA-P PHOTO INSTRUCTIONS

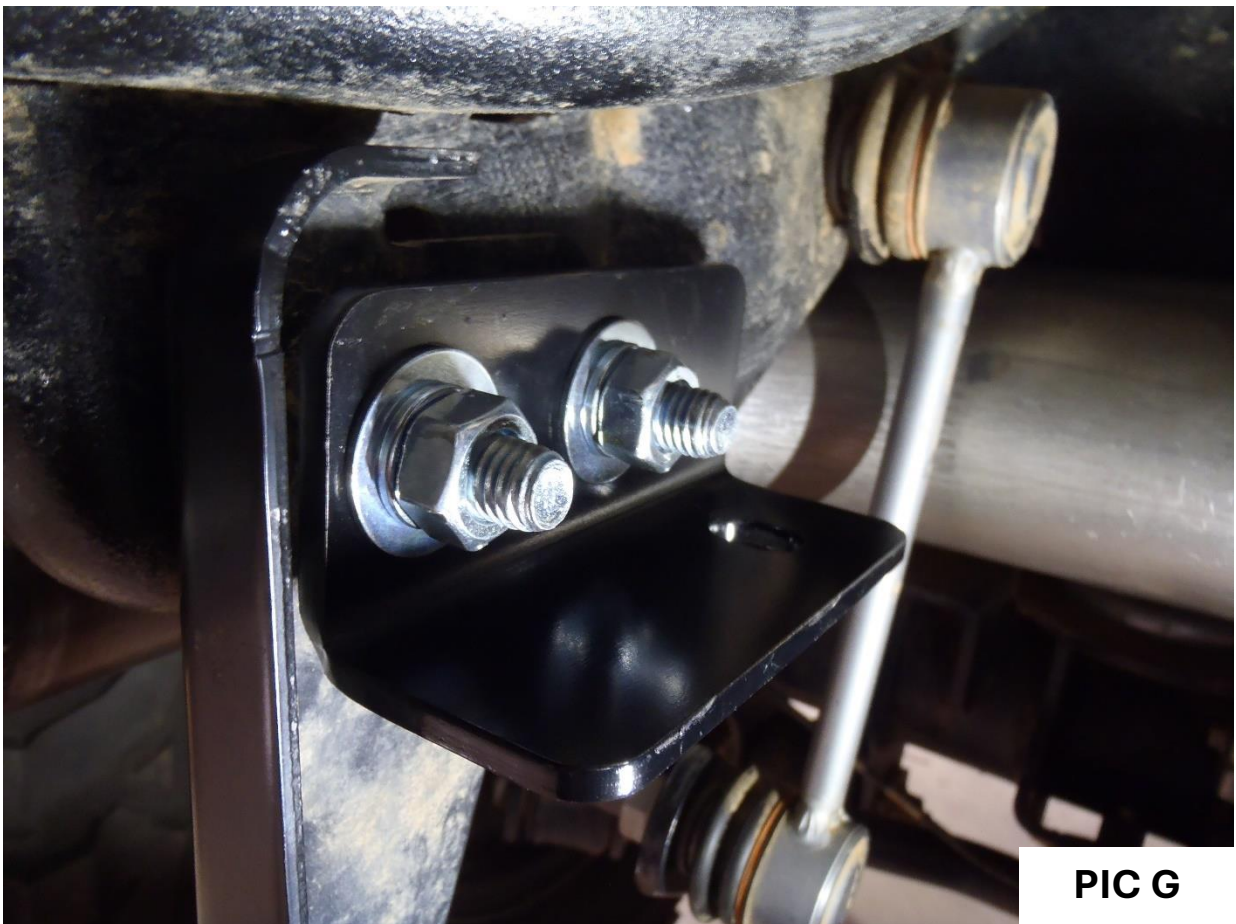


PIC E

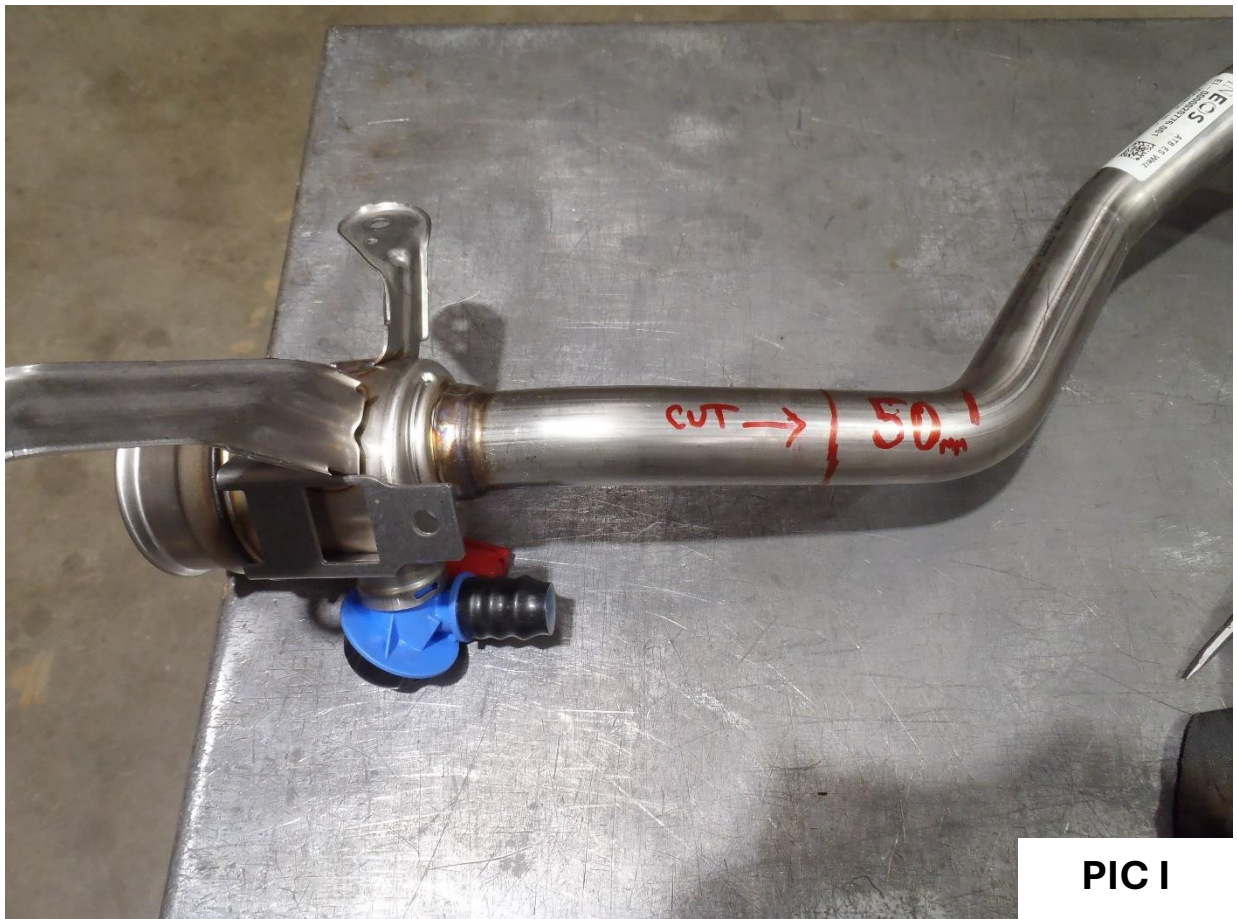


PIC F1

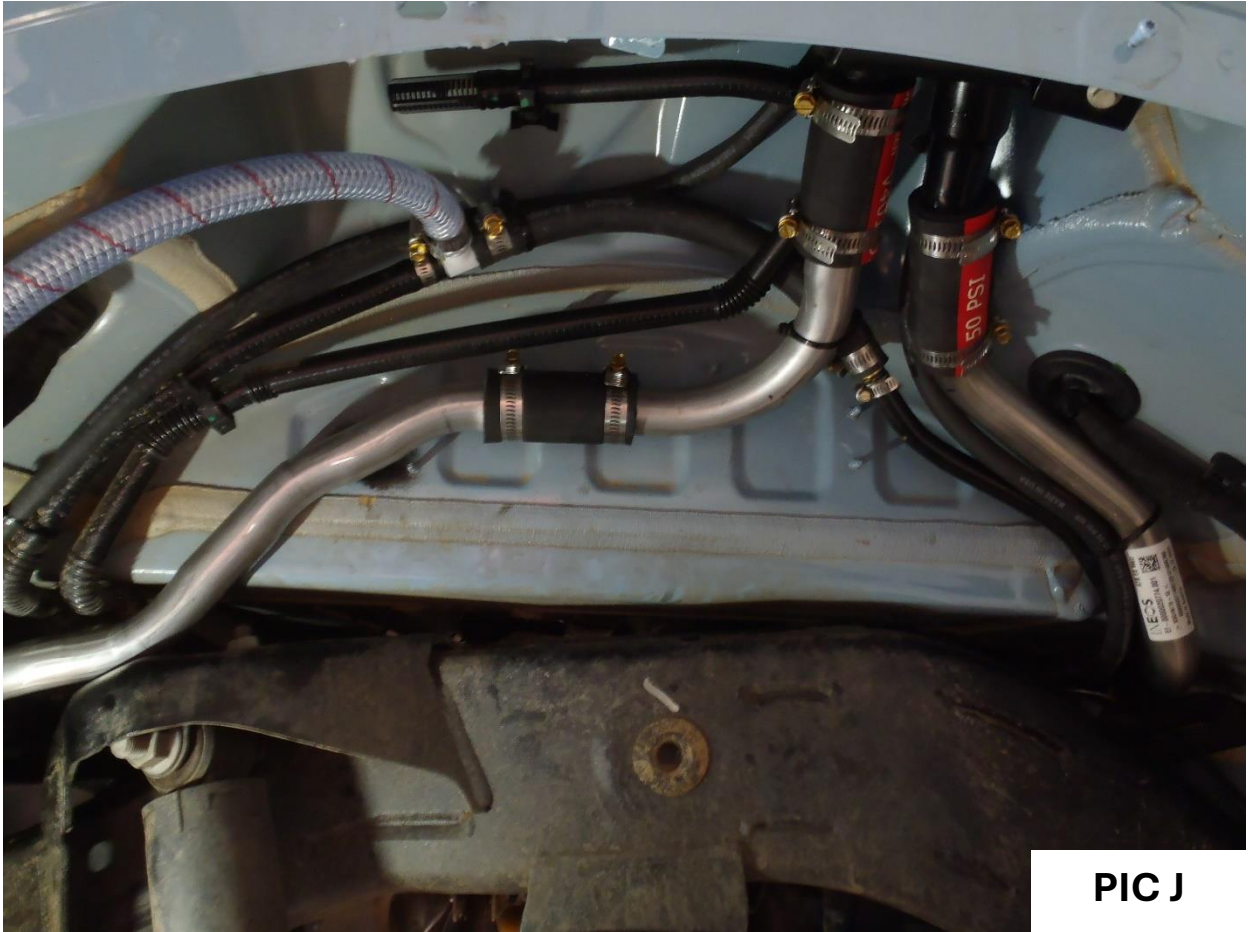
INEGRA-P PHOTO INSTRUCTIONS

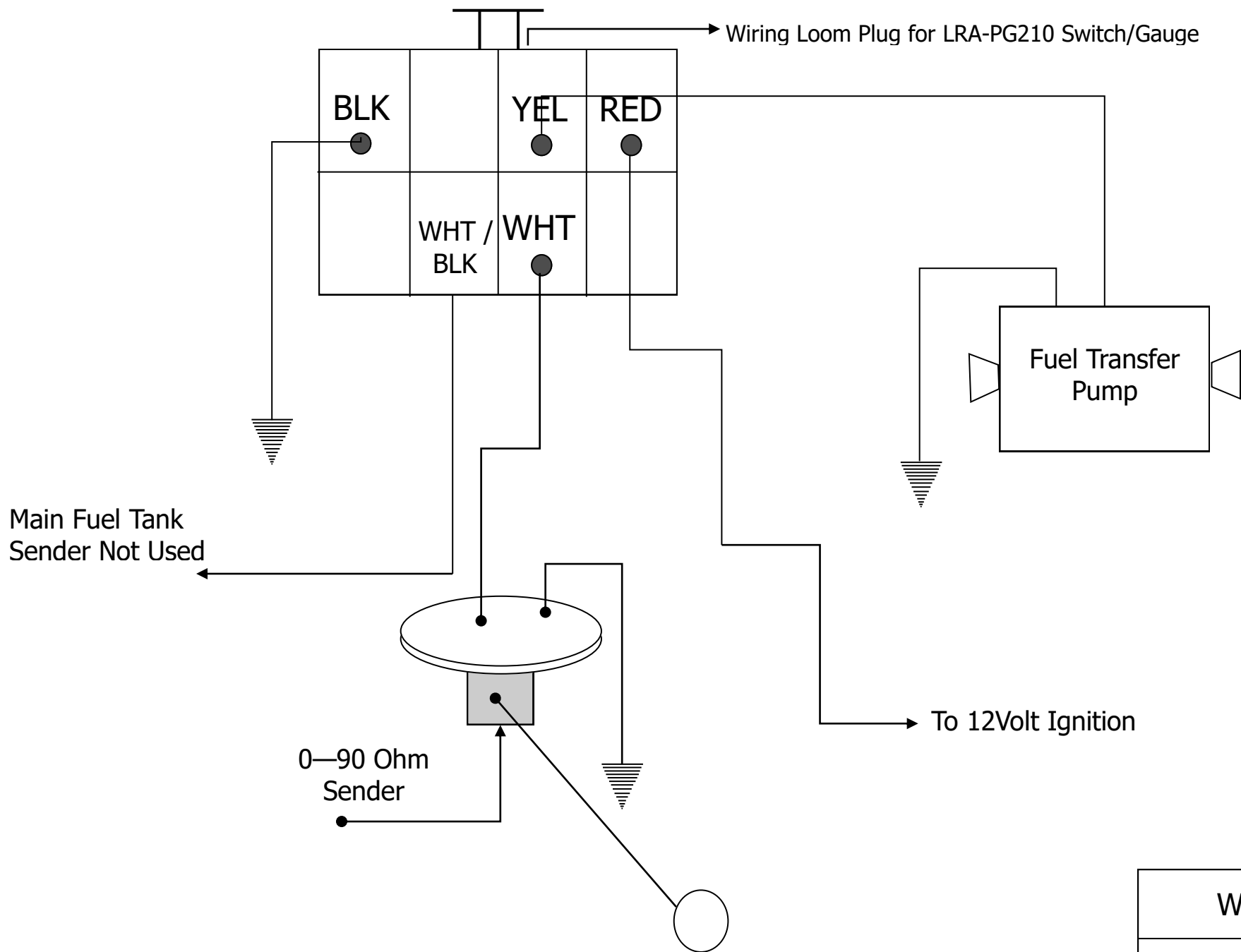


INEGRA-P PHOTO INSTRUCTIONS



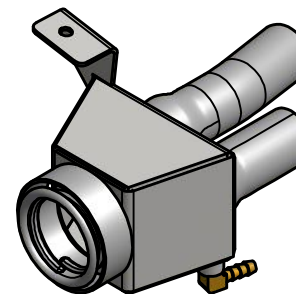
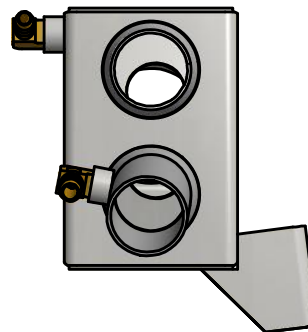
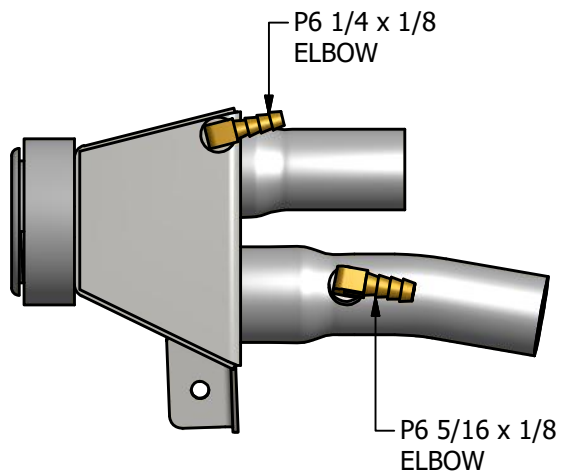
INEGRA-P PHOTO INSTRUCTIONS



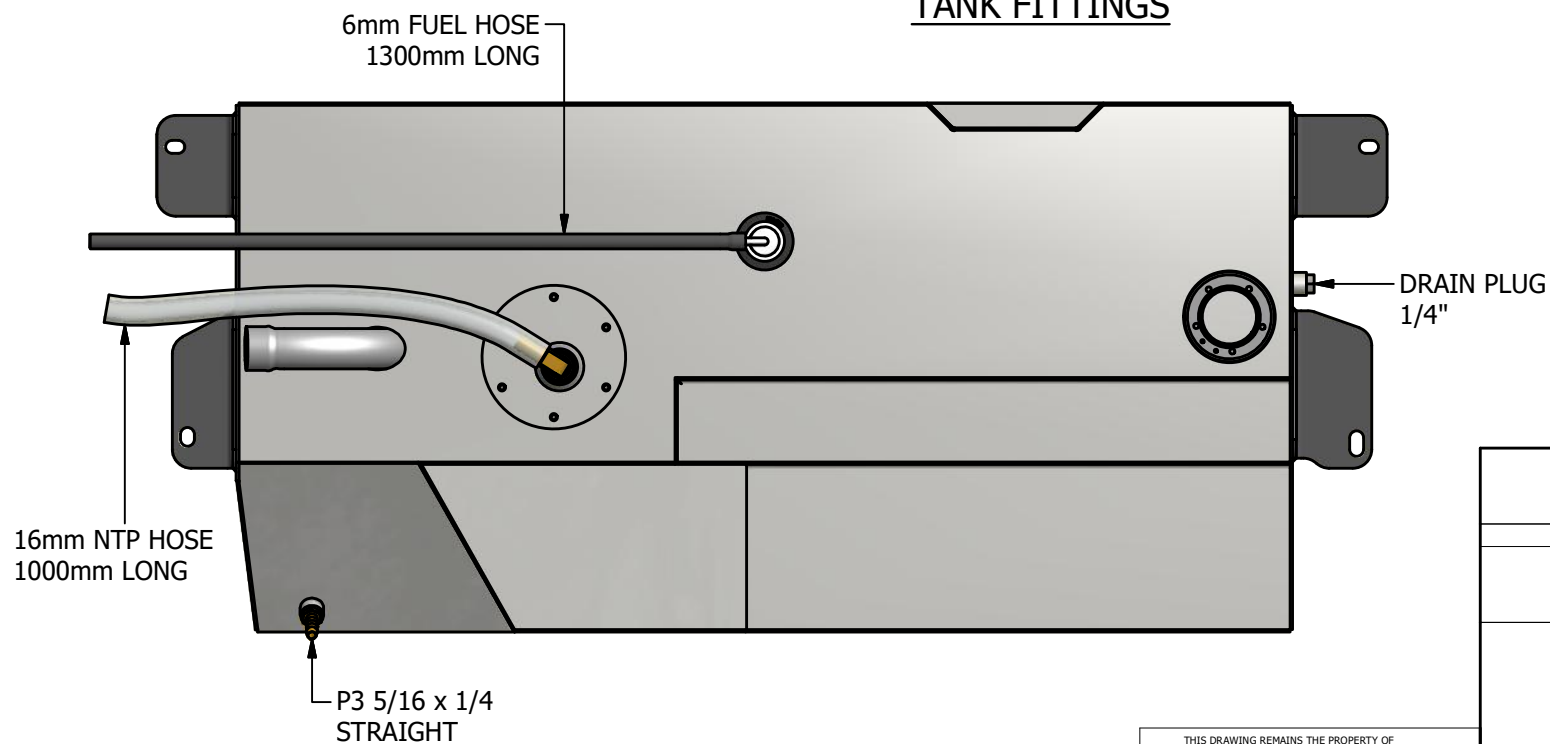


WDSGPG210

TWIN FILLER FITTINGS

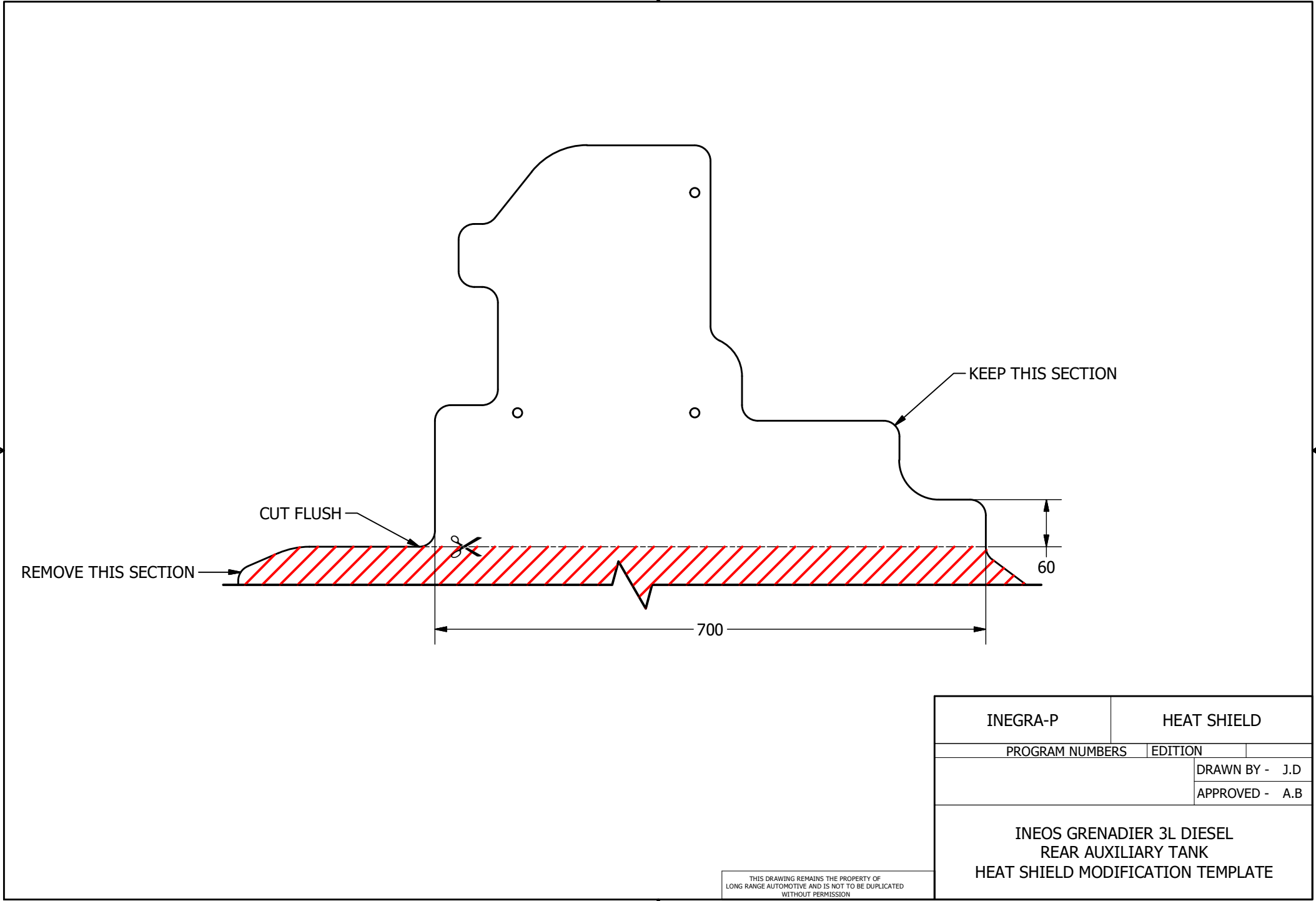


TANK FITTINGS



THIS DRAWING REMAINS THE PROPERTY OF
LONG RANGE AUTOMOTIVE AND IS NOT TO BE DUPLICATED
WITHOUT PERMISSION

INEGRA-P		FITTINGS	
PROGRAM NUMBERS		EDITION 1	16/10/2024
		DRAWN BY - J.D	
		APPROVED -	
INEOS GRENADIER 3L PETROL REAR AUXILIARY TANK TWIN FILLER			





Installation Instructions for INEGRA-P Ineos Grenadier Petrol Wagon 90L Auxiliary Tank

INSTALLATION VIDEO GUIDE – YOUTUBE

Using the link below, you can access our installation reference video for the INEGRA-P, including the exhaust modifications.

You will still require the written version of the fitting instructions for the INEGRA-P for a more detailed layout, as well as the reference photos, diagrams and fitting kit contents.

You can use the installation video as a guide when installing the INEGRA-P.

<https://youtu.be/pqylb52cmK4>

If you have any issues accessing the link above, please contact
admin@longrangeautomotive.com.au